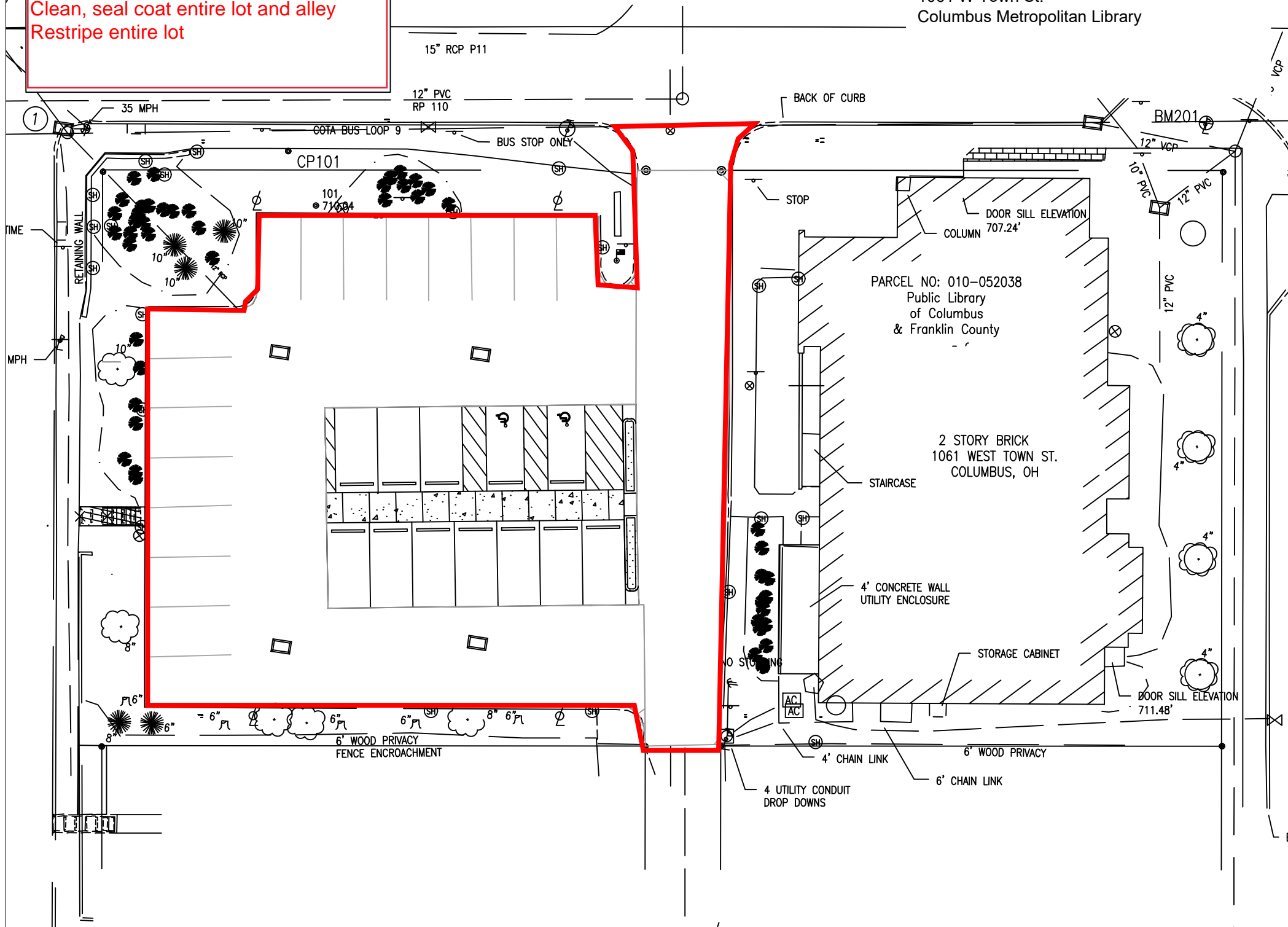


# CML Franklinton

Clean, seal coat entire lot and alley  
Restripe entire lot

## Legend

1061 W Town St.  
Columbus Metropolitan Library

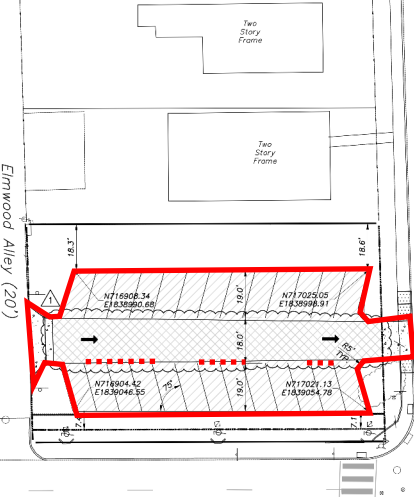


# MARTIN LUTHER KING BRANCH

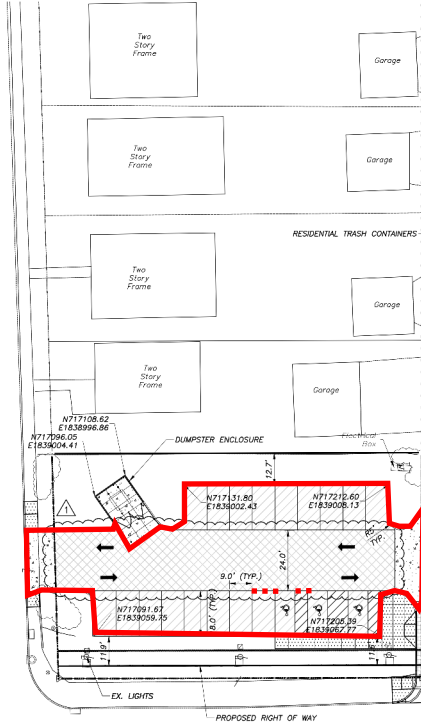
Crack fill areas marked with dashed lines (location/measurements approximate)

Clean, Seal coat both lots and alley

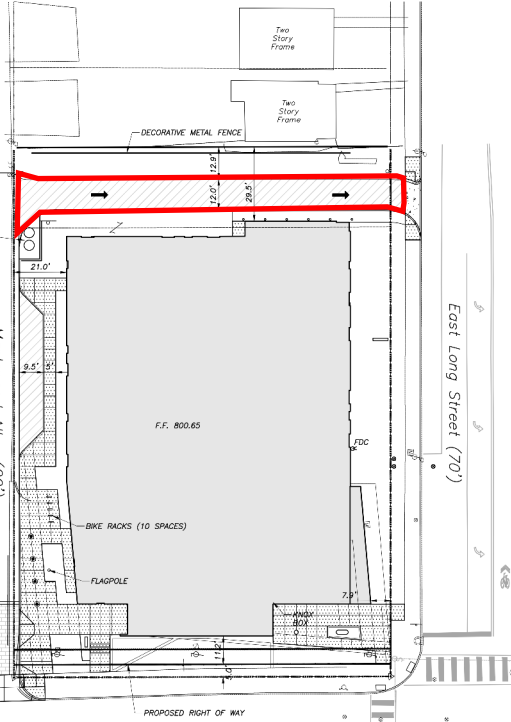
Restripe both lots



East Eastwood Avenue (50')



Maplewood Alley (20')



East Long Street (70')

An aerial photograph of a parking lot and building complex. A red outline highlights a specific area within the parking lot. Inside this red-outlined area, several dashed red lines are drawn across the asphalt, indicating areas for crack filling. The parking lot contains several cars, and a drive-up lane is visible. To the right of the parking lot is a large, light-colored building with a flat roof. The surrounding area includes residential houses and trees.

### PARSONS BRANCH

Crack fill areas  
marked with dashed  
lines (locations/  
measurements  
approximate)

Clean, Seal coat entire  
lot, including drive-up  
lane

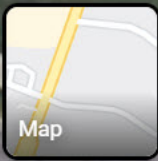
Restripe entire lot

CML SOUTH HIGH BRANCH

CLEAN, SEALCOAT AND  
RESTRIPE ENTIRE LOT

Sign in

Columbus Metropolitan  
Library - South High...  
CLOSED



Google