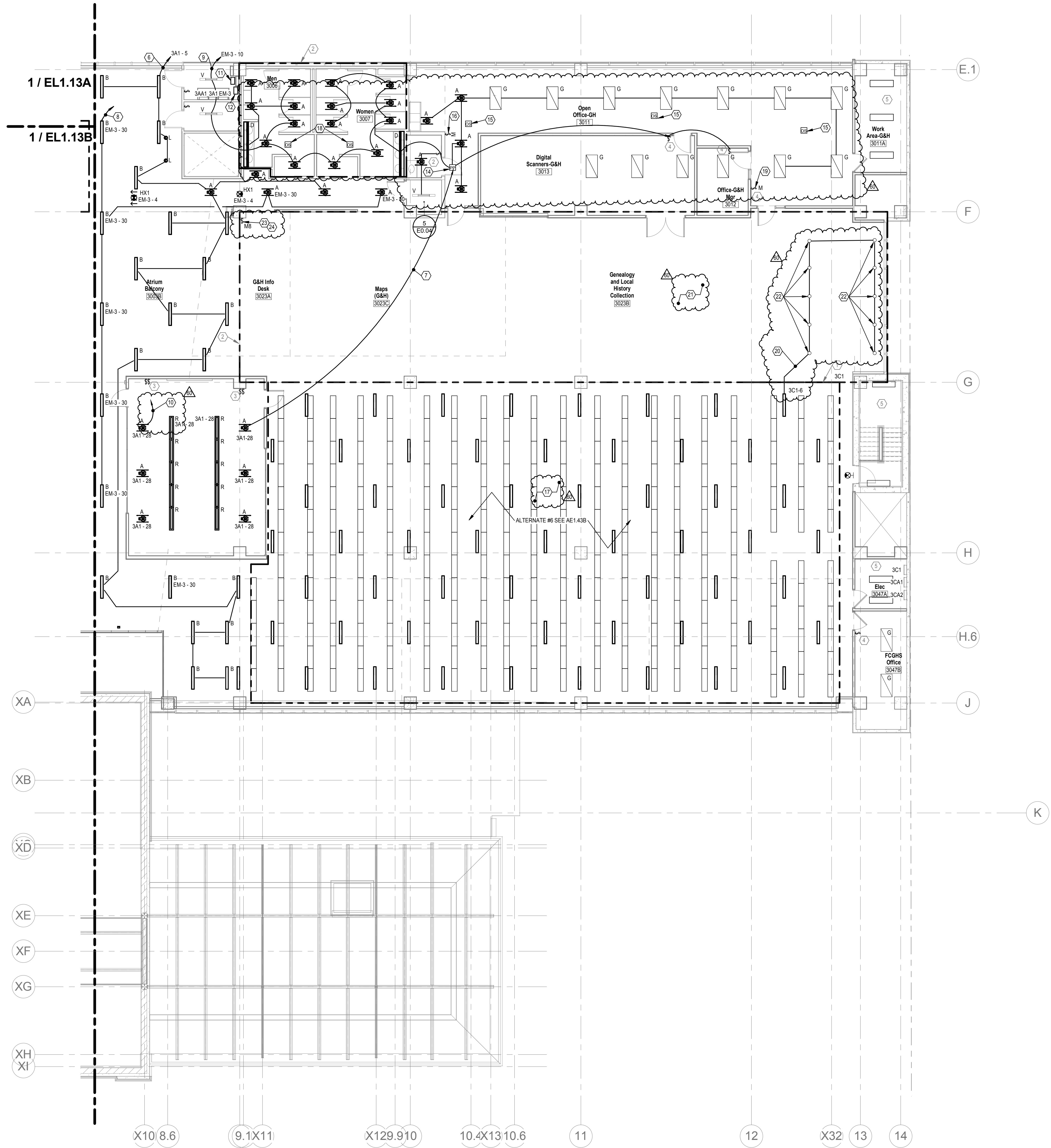


C:\Users\jmorco\OneDrive\Desktop\Revit Central Files\17-175008-CML - Main Branch ELEC.rvt
5/24/2018 9:14:38 AM



THIRD FLOOR LIGHTING PLAN C
SCALE: 1/8" = 1'-0"

GENERAL NOTES

A. COORDINATE LOCATION ALL LIGHTING WITH ARCHITECTURAL REFLECTED CEILING PLANS.

NOTES

1. ALL EXISTING LUMINAIRES IN THIS AREA SHALL BE WIRED TO THIS DESIGNATED PANEL UNLESS OTHERWISE NOTED. NIGHT LIGHTING AND EGRESS LUMINAIRES SHALL BE CONTROLLED SEPARATELY.
2. ALL LUMINAIRES IN THIS AREA SHALL BE WIRED TO THIS DESIGNATED PANEL UNLESS OTHERWISE NOTED. NIGHT LIGHTING AND EGRESS LUMINAIRES SHALL BE CONTROLLED SEPARATELY.
3. PROVIDE LUTRON NOVA-T 0-10V WALLBOX DIMMERS AND CEILING MOUNTED OCCUPANCY SENSOR, TYPICAL FOR MEETING ROOMS. COORDINATE EXACT REQUIREMENTS AND LOCATIONS WITH THE STUDIO PRIOR TO ANY WORK BEING DONE.
4. FOR PRIVATE OFFICE, PROVIDE LUTRON CEILING MOUNTED RF VACANCY SENSOR AND LUTRON RF WALL SWITCH FOR CONTROL, TYPICAL FOR OFFICES. COORDINATE EXACT REQUIREMENTS WITH THE STUDIO PRIOR TO ANY WORK BEING DONE.
5. NO LIGHTING WORK IN THIS AREA. MAINTAIN EXISTING CIRCUITS AND CONTROLS.

GENERAL NOTES

- B. WHEN REMOVING PORTIONS OF CKTS, MAINTAIN REMAINING LTG ON CKT. PROVIDE NEW WIRE RUN THRU RELAY PANEL WHERE NECESSARY.
- C. CIRCUITING DESCRIBED IN NOTES INTENDED AS LABELED ON DRAWINGS OF CIRCUITS OR RELAY NUMBERS DIFFERENT FROM DRAWINGS. CONTRACTOR SHALL MARK UP ON AS-BUILT DRAWINGS FOR OWNER.

CODED NOTES

6. REMOVE GROUP OF LTG FROM EXISTING CKT 3A1-28 & RE-CKT AS SHOWN. EXTEND CKT 3A1-5 THRU RELAY RLP3-5.
7. CONNECT LTG IN LARGE MTG RM 3016 TO LTG IN NEARBY RMS AS SHOWN TO MAINTAIN CKT.
8. MAINTAIN EXISTING CKT EM-3-30 THRU RELAY RLP3-8. GROUPING SHOWN FOR CLARITY.
9. REMOVE GROUP OF LTG FROM EXISTING CKT EM-3-30 & RE-CKT AS SHOWN. DO NOT EXTEND THRU RELAY PANEL.
10. MAINTAIN EXISTING CKT 3A1-28 THRU RELAY PANEL. REMOVE CKT 3A1-28 FROM RELAY PANEL (RLP3-8). LTG TO BE CONTROLLED BY LOCAL OCCUPANCY SENSORS.
11. EXISTING DIMMING RELAY PANEL (LUTRON: ESN) "DRLEP" FOR EMERGENCY LTG IN READING ROOM. CKT THRU ESN TO PROVIDE POWER TO PANEL.
12. EXISTING DIMMING RELAY PANEL (LUTRON: ESN) "DRLEP" RELOCATED FROM READING ROOM FOR NORMAL LTG IN READING ROOM. CKT THRU ESN TO PROVIDE POWER TO PANEL.
13. NOT USED.
14. PROVIDE POWER PACK FOR WIRELESS DEVICE CONTROL OF LOCAL ROOM.
15. PROVIDE DUAL-TECH CEILING MOUNTED OCCUPANCY SENSOR FOR CONTROL OF LOCAL LTG.
16. PROVIDE 1-BUTTON MOMENTARY CONTACT SWITCH FOR ON/OFF CONTROL OF LOCAL LTG.
17. LTG IN THIS AREA ON CKT 3C1-6, RELAY RLP3-4. PROGRAM AS SEPARATE ZONE IN LUTRON CONTROLLER PROGRAM.
18. EXISTING OCCUPANCY SENSOR TO REMAIN. SHOWN FOR REFERENCE ONLY.
19. EXISTING MOMENTARY CONTACT SWITCH. REVISE PROGRAMMING TO WORK WITH LOCAL OCCUPANCY SENSORS.
20. EXISTING CONDITION: DOWNLIGHTS ON CKT 3C1-6 SHOWN FOR REFERENCE ONLY.
21. LTG IN THIS AREA (N.L.O.) ON CKT 3C1-4, RELAY RLP3-1 (EXISTING CONDITION) SHOWN FOR REFERENCE ONLY.
22. ALTERNATE #1: REPLACE EXISTING DOWNLIGHTS WITH LED RETROFIT, RX1. REFER TO LIGHTING FIXTURE SCHEDULE ON ED.17 FOR SPECIFICATION OF RX1.
23. PROVIDE LUTRON 1-BUTTON MOMENTARY CONTACT SWITCH TO BE "JANITOR SWITCH" FOR THIRD FLOOR LIGHTING. SWITCH SHALL TURN LIGHTING ON IN 30 MINUTE INCREMENTS UP TO MAX OF 2 HOURS. SWITCH SHALL BE DISABLED DURING NORMAL BUSINESS HOURS. COORDINATE EXACT LOCATION IN FIELD WITH OWNER.
24. MOMENTARY CONTACT SWITCH #8 BUTTON SHALL CONTROL LTG CKTS 3C1-4 AND 3C1-6.



SchooleyCaldwell Associates
architects engineers planners interior designers

300 Marconi Boulevard T 614-628-0300
Columbus OH 43215 F 614-628-0311
schooley@scaldwell.com



GUNDPARTNERSHIP

ARCHITECTURE | PLANNING
47 THORNDIKE STREET
CAMBRIDGE, MA 02141
617 250 8800
617 577 9614 FAX

Consultants:
Structural
SMBH
1700 South Road, Suite 200
Columbus, Ohio 43215-1038

Mechanical, Electrical, Plumbing & Fire
Protection
Heapy Engineering
440 W. Southville Lane
Blythe, Ohio 45619-1310

Landscape
MKSK
402 South Union Alley
Columbus, Ohio 43215

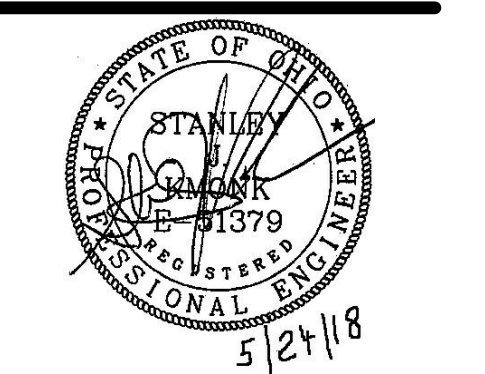


Main Branch
96 South Grant Avenue
Columbus, OH 43215

Drawing Issue Dates
Record Document
October 28, 2016

REVISIONS:

REV NO	DESCRIPTION	DATE
00	PHASE 2	5/24/18



THIRD FLOOR LIGHTING PLAN C

EL1.13C

KORDA | CML
09/22/2017 | 2017-5008

KORDA
KORDA, NEWETH ENGINEERING
1650 WATERMARK DRIVE
SUITE 200
COLUMBUS, OHIO 43215
DRAWN BY: PSJ
DESIGNED BY: PSJ
CHECKED BY: CHECKER
PROJECT NUMBER: 2017-5008