

C:\Users\ogallina\Desktop\central files\2017-5008 CML Main Branch\PSG_17-175008-CML - Main Branch ELECC.rvt
6/13/2018 2:07:21 PM

GENERAL NOTES

- A. COORDINATE LOCATION ALL LIGHTING WITH ARCHITECTURAL REFLECTED CEILING PLANS.
- B. ALL EXISTING EMNL LUMINAIRES SHALL BE CIRCUITED TO THE NEW EM-3 PANELBOARD PROVIDED IN ROOM 3035 IN AREA "C".

NOTES

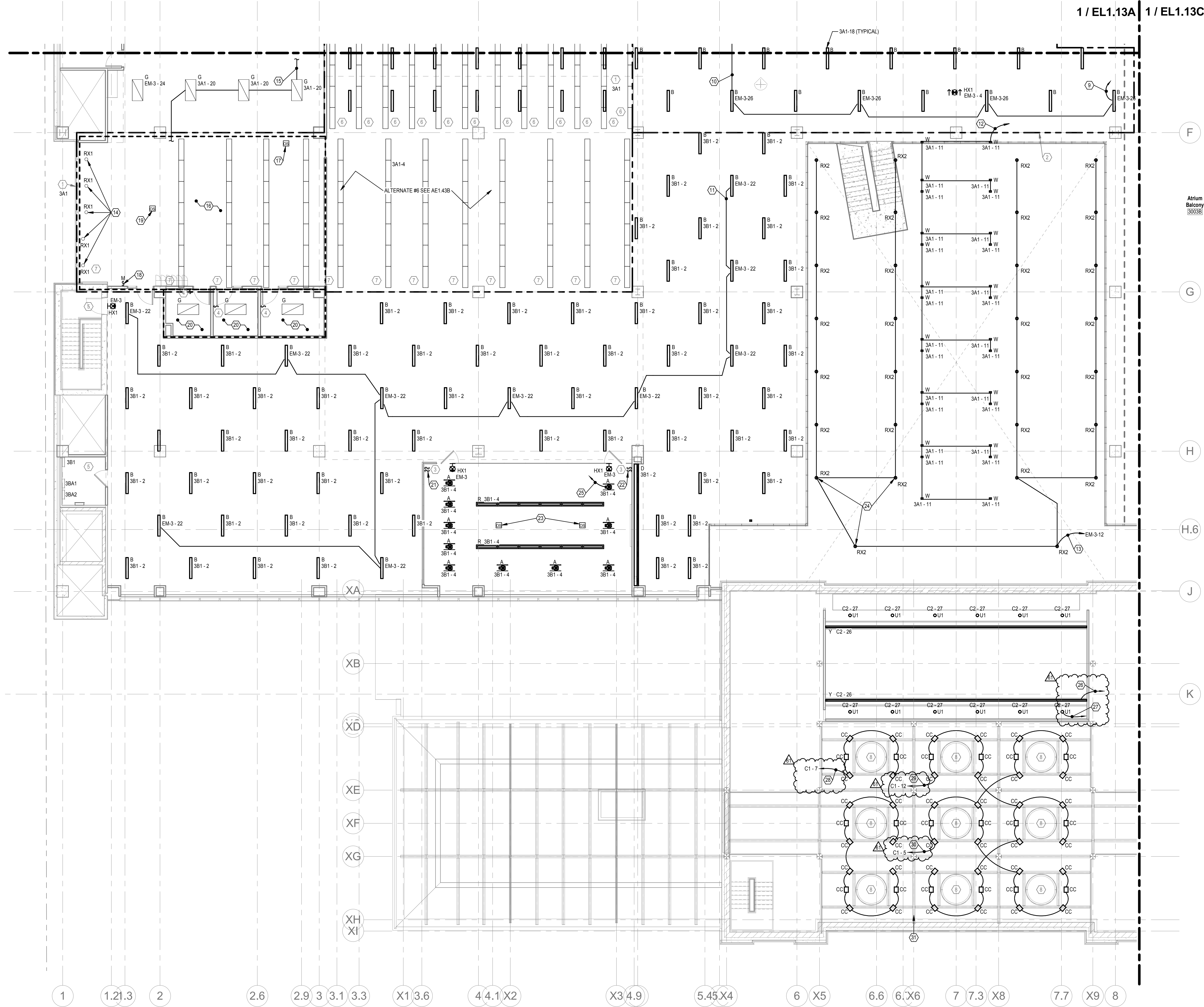
1. ALL EXISTING LUMINAIRES IN THIS AREA SHALL BE WIRED TO THIS DESIGNATED PANEL UNLESS OTHERWISE NOTED. NIGHT LIGHTING AND EGRESS LUMINAIRES SHALL BE CONTROLLED SEPARATELY.
2. ALL LUMINAIRES IN THIS AREA SHALL BE WIRED TO THIS DESIGNATED PANEL UNLESS OTHERWISE NOTED. NIGHT LIGHTING AND EGRESS LUMINAIRES SHALL BE CONTROLLED SEPARATELY.
3. PROVIDE LUTRON NDA-W-1-9-10V WALLBOX DIMMERS AND CEILING MOUNTED OCCUPANCY SENSOR. TYPICAL FOR MEETING ROOMS. COORDINATE EXACT REQUIREMENTS AND LOCATIONS WITH TEC STUDIO PRIOR TO ANY WORK BEING DONE.
4. FOR PRIVATE OFFICE, PROVIDE LUTRON CEILING MOUNTED VACANCY SENSOR AND LUTRON RF WALL SWITCH FOR CONTROL. TYPICAL FOR OFFICES. COORDINATE EXACT REQUIREMENTS WITH TEC STUDIO PRIOR TO ANY WORK BEING DONE.
5. NO LIGHTING WORK IN THIS AREA. MAINTAIN EXISTING CIRCUITS AND CONTROLS.
6. THE EXISTING CIRCUIT SERVING THIS ROW OF EXISTING LUMINAIRES TO REMAIN IS FROM A PANELBOARD BEING REMOVED. INTERCEPT THE CIRCUIT AND PROVIDE A NEW 277 VOLT/20 AMP CIRCUIT & BREAKER IN PANELBOARD 3A1. CONTROL LIGHTING THROUGH THE NEW LUTRON RELAY PANEL.
7. THIS EXISTING ROW OF LUMINAIRES TO REMAIN. MAINTAIN EXISTING CIRCUITS AND CONTROL THROUGH THE EXISTING CONTACTOR.
8. MAINTAIN EXISTING CIRCUITS TO NEW LUMINAIRES. MAINTAIN EXISTING CONTROLS TO NEW LUMINAIRES.

GENERAL NOTES

- C. WHEN REMOVING PORTIONS OF CKTS, MAINTAIN REMAINING LTG ON CKT. PROVIDE NEW HOME-RUN (THRU RELAY PANEL) WHERE NECESSARY.
- D. CIRCUITING DESCRIBED IN NOTES INTENDED AS LABELED ON DRAWINGS OF CIRCUITS OR RELAY NUMBERS DIFFERENT FROM DRAWINGS. CONTRACTOR SHALL MARK-UP ON AS-BUILT DRAWINGS FOR OWNER.

CODED NOTES

9. MAINTAIN EXISTING CKT EM-3-26 THRU RELAY RLP3-2. GROUPING SHOWN FOR CLARITY.
10. CKT CONTINUES TO LTG IN ADJACENT SPACE.
11. MAINTAIN EXISTING CKT EM-3-22 THRU RELAY RLP3-4. GROUPING SHOWN FOR CLARITY.
12. MAINTAIN EXISTING CKT 3A1-11 THRU RELAY RLP3-5. GROUPING SHOWN FOR CLARITY.
13. REMOVE GROUP OF LTG FROM EXISTING CKT 3A1-3 (RELAY RLP3-11) AND RE-CKT TO EM-3-12. EXTEND 0-10V DIMMING CKT THRU RELAY RLP4-2. PROGRAM DIMMING CONTROL OF RX2 LTG INTO LUTRON CONTROLLER PROGRAM. CKT SHALL BE ON/OFF BY NORMAL SCHEDULING AND ON TO FULL BRIGHTNESS IN EMERGENCY.
14. REPLACE EXISTING 8" DOWNLIGHT WITH LED RETROFIT DOWNLIGHT, RX1. REFER TO LIGHTING FIXTURE SCHEDULE ON E0.17 FOR SPECIFICATION OF RX1.
15. REFER TO SHEET EL1.13A FOR CONTINUATION OF FIXTURE GROUPING.
16. REMOVE GROUP OF LTG (TYPES R2 AND RX1) FROM EXISTING CKT 3A1-4 AND RE-CKT TO ADJACENT CKT 3A1-20 AS SHOWN.
17. PROVIDE DUAL TECH CEILING MOUNTED OCCUPANCY SENSOR FOR LIGHTING CONTROL WITHIN ROOM.
18. PROVIDE 1-BUTTON MOMENTARY CONTACT SWITCH FOR ON/OFF CONTROL OF LOCAL ROOM.
19. NOT USED.
20. LTG IN THESE ROOMS TO BE REMOVED FROM CKT 3B1-2 AND CONNECTED TO ADJACENT CKT 3A1-20 AHEAD OF ANY SWITCHING.
21. REMOVE TWO (2) EXISTING WALL SWITCH / SENSOR / DIMMERS AND REPLACE WITH 2-GANG BLANK COVER PLATE. TURN REMOVED DEVICES OVER TO OWNER.
22. REMOVE TWO (2) EXISTING TOGGLE SWITCHES AND REPLACE WITH TWO (2) LOW VOLTAGE DIMMER SWITCHES. ONE SHALL CONTROL DOWNLIGHTS, ONE SHALL CONTROL LINEAR LIGHTS.
23. EXISTING DUAL TECH OCCUPANCY SENSORS TO REMAIN. SHOWN FOR REFERENCE ONLY.
24. (TYPICAL) REPLACE EXISTING ATRIUM DOWNLIGHTS WITH FIXTURE TYPE RX2 (TO BE PROVIDED BY OWNER). LOCATE REMOTE DRIVERS ACCESSIBLE ALONG CATWALK COORDINATE WITH OWNER FOR EXACT DRIVER LOCATIONS. INSTALL WITH 0-10V DIMMING CONTROL WIRES.
25. REMOVE CKT 3A1-4 FROM RELAY RLP7-2.
26. EXTEND EXISTING LIGHTING CIRCUIT C2-26 THRU RELAY RLP11-3. PROGRAM CARNegie ENTRY COVE LIGHTING ZONE IN LUTRON CONTROLLER PROGRAM.
27. EXTEND EXISTING LIGHTING CIRCUIT C2-27 THRU RELAY RLP11-4. PROGRAM CARNegie ENTRY DOWN LIGHTING ZONE IN LUTRON CONTROLLER PROGRAM.
28. EXTEND EXISTING LIGHTING CIRCUIT C1-7 THRU RELAY RLP10-6. PROGRAM CARNegie SKYLIGHT LIGHTING ZONE IN LUTRON CONTROLLER PROGRAM.
29. EXTEND EXISTING LIGHTING CIRCUIT C1-12 THRU RELAY RLP10-7. PROGRAM CARNegie SKYLIGHT LIGHTING ZONE IN LUTRON CONTROLLER PROGRAM.
30. EXTEND EXISTING LIGHTING CIRCUIT C1-5 THRU RELAY RLP10-5. PROGRAM CARNegie SKYLIGHT LIGHTING ZONE IN LUTRON CONTROLLER PROGRAM.
31. SKYLIGHT CIRCUITING EXISTING. SHOWN FOR CLARITY ONLY.



THIRD FLOOR LIGHTING PLAN B
SCALE: 1/8" = 1'-0"



300 Marconi Boulevard Columbus OH 43215
T 614-628-0300 F 614-628-0311
schooley Caldwell.com



ARCHITECTURE | PLANNING
47 THORNDIKE STREET
CAMBRIDGE, MA 02141
617 1250 8800
617 577 9614 FAX

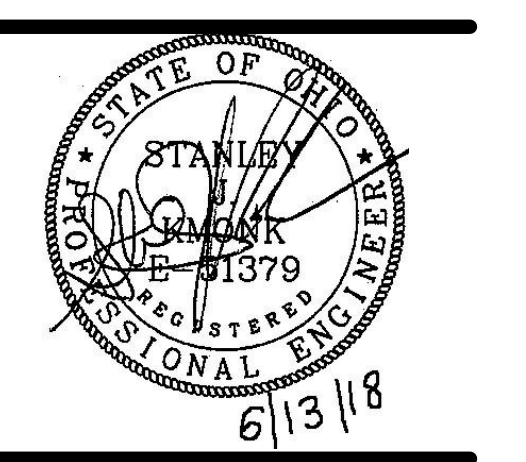
Consultants:
Structural: SMBH
Mechanical, Electrical, Plumbing & Fire Protection: Heapy Engineering
Landscape: NIKSK
Landscape: NIKSK



Main Branch
96 South Grant Avenue
Columbus, OH 43215

Drawing Issue Dates
Record Document
October 28, 2016

REV NO	DESCRIPTION	DATE
60	PHASE 2	5/24/18
61	PHASE 3	6/13/18



THIRD FLOOR LIGHTING PLAN B

EL1.13B
KORDA | CML

09/22/2017 | 2017-5008

KORDA
KORDA NEMETH ENGINEERING
1650 WATERMARK DRIVE
SUITE 200
COLUMBUS, OHIO 43215
DRAWN BY: Author
DESIGNED BY: PSG
CHECKED BY: CHECKER
PROJECT NUMBER: 2017-5008