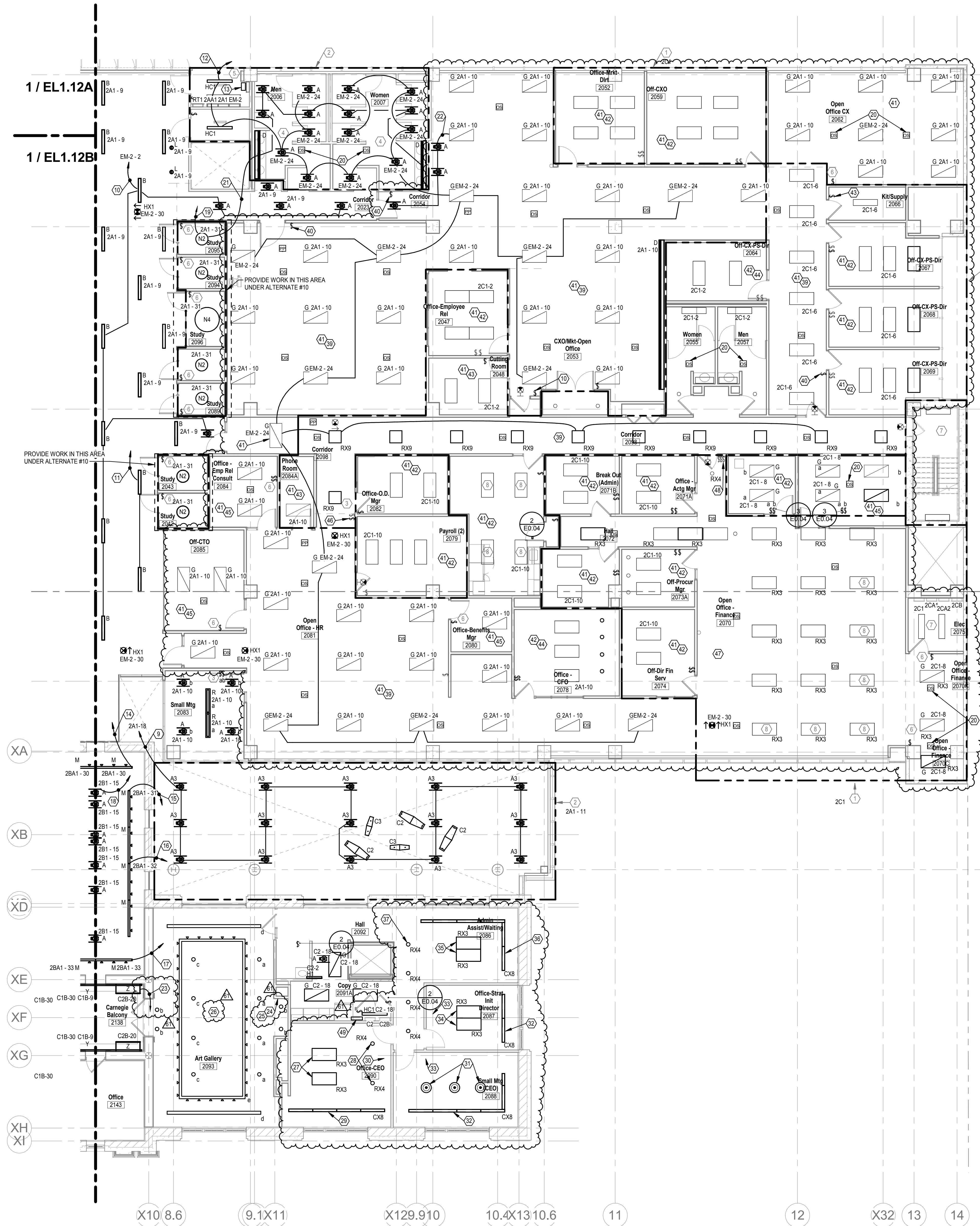


C:\Users\gallinat\Desktop\central files\2017-5008 CML Main Branch\PSG\_17-175008-CML - Main Branch ELEC.rvt  
6/13/2018 2:07:10 PM



SECOND FLOOR LIGHTING PLAN C  
SCALE: 1/8" = 1'-0"

**GENERAL NOTES**

A. COORDINATE LOCATION ALL LIGHTING WITH ARCHITECTURAL REFLECTED CEILING PLANS.

**NOTES**

1. ALL EXISTING LUMINAIRES IN THIS AREA SHALL BE WIRED TO THIS DESIGNATED PANEL UNLESS OTHERWISE NOTED. NIGHT LIGHTING AND EGRESS LUMINAIRES SHALL BE CONTROLLED SEPARATELY.
2. ALL LUMINAIRES IN THIS AREA SHALL BE WIRED TO THIS DESIGNATED PANEL UNLESS OTHERWISE NOTED. NIGHT LIGHTING AND EGRESS LUMINAIRES SHALL BE CONTROLLED SEPARATELY.
3. PROVIDE LUTRON NOVA-T 0-10V WALLBOX DIMMERS AND CEILING MOUNTED OCCUPANCY SENSOR. TYPICAL FOR MEETING ROOMS. COORDINATE EXACT REQUIREMENTS AND LOCATIONS WITH TEC STUDIO PRIOR TO ANY WORK BEING DONE.
4. PROVIDE LUTRON DUAL TECH CEILING MOUNTED OCCUPANCY SENSORS. TYPICAL COORDINATE EXACT REQUIREMENTS WITH TEC STUDIO PRIOR TO ANY WORK BEING DONE.
5. LOCATION OF RELAY PANEL. COORDINATE EXACT REQUIREMENTS WITH TEC STUDIO PRIOR TO ANY WORK BEING DONE.
6. FOR PRIVATE OFFICE, PROVIDE LUTRON CEILING MOUNTED RF VACANCY SENSOR AND LUTRON RF WALL SWITCH FOR CONTROL. TYPICAL FOR OFFICES. COORDINATE EXACT REQUIREMENTS WITH TEC STUDIO PRIOR TO ANY WORK BEING DONE.
7. NO LIGHTING WORK IN THIS AREA. MAINTAIN EXISTING CIRCUITS AND CONTROLS.
8. LUMINAIRE SHALL BE REMOVED STORED AND INSTALLED AFTER CEILING WORK IN THIS AREA. CLEAN, RELAMP, BALLAST AND INSTALL FIXTURE IN SAME LOCATION. PROVIDE DISCONNECT FOR FOOT LUMINAIRES PER NEC REQUIREMENTS.

**GENERAL NOTES**

- A. WHEN REMOVING PORTIONS OF CKTS, MAINTAIN REMAINING LTG ON CKT. PROVIDE NEW HOME-RUN (THRU RELAY) WHERE NECESSARY.
- B. CIRCUITING DESCRIBED IN NOTES INTENDED AS LABELED ON DRAWINGS OF CIRCUITS OR RELAY NUMBERS DIFFERENT FROM DRAWINGS. CONTRACTOR SHALL MARK-UP ON AS-BUILT DRAWINGS FOR OWNER.
- C. PROVIDE AND/OR CUT CEILING TILES AS NEEDED FOR NEW FIXTURES.

**CODED NOTES**

9. REMOVE GROUP OF LTG FROM EXISTING CKT 2A1-11 & RE-CKT AS SHOWN. EXTEND CKT 2A1-18 THRU RELAY DRP3-1.
10. REMOVE GROUP OF LTG FROM EXISTING CKT EM-2-24 & RE-CKT AS SHOWN. EXTEND CKT EM-2-2 THRU RELAY RLPE2-6.
11. REMOVE GROUP OF LTG FROM EXISTING CKT & CONNECT TO ADJACENT CKT 2A1-9.
12. MAINTAIN EXISTING CKT EM-2-24. REMOVE CKT FROM RELAY PANEL & LEAVE CKT HOT.
13. PROVIDE NEW DIMMING RELAY PANEL (LUTRON: ESN: "DRP3") FOR NORMAL LTG ON 2ND FLOOR. CKT THRU ESN TO PROVIDE POWER TO PANEL.
14. EXTEND CKT 2B1-30 THRU RELAY RLPE-11. PROGRAM AS TRACK LTG ZONE FOR LOCAL ROOM IN LUTRON CONTROLLER PROGRAM.
15. EXTEND CKT 2B1-31 THRU RELAY RLPE-12. PROGRAM AS TRACK LTG ZONE FOR LOCAL ROOM IN LUTRON CONTROLLER PROGRAM.
16. EXTEND CKT 2B1-32 THRU RELAY RLPE-13. PROGRAM AS TRACK LTG ZONE FOR LOCAL ROOM IN LUTRON CONTROLLER PROGRAM.
17. EXTEND CKT 2B1-33 THRU RELAY RLPE-14. PROGRAM AS TRACK LTG ZONE FOR LOCAL ROOM IN LUTRON CONTROLLER PROGRAM.
18. EXTEND CKT 2B1-15 THRU RELAY RLPE-1. PROGRAM AS DOWNLIGHTING ZONE FOR LOCAL ROOM IN LUTRON CONTROLLER PROGRAM.
19. REMOVE CIRCUIT 2A1-31 FROM RELAY PANEL (RLP2-10).
20. EXISTING OCCUPANCY SENSOR TO REMAIN. SHOWN FOR REFERENCE ONLY.
21. REMOVE NORMAL LIGHTING IN 2006 AND 2007 FROM CIRCUIT 2A1-9 AND RE-CIRCUIT TO ADJACENT CIRCUIT 2A1-11 AS SHOWN.
22. REMOVE GROUP OF LIGHTING FROM CIRCUIT 2A1-9 AND RE-CIRCUIT TO ADJACENT CIRCUIT 2A1-10 AS SHOWN.
23. EXTEND EXISTING CIRCUIT C2B-20 THRU RELAY RLP1-5. PROGRAM AS CARNEGIE HALL LEVEL 2 ART LTG ZONE IN LUTRON CONTROLLER PROGRAM.
24. 4-GANG TOGGLE SWITCHES AND 2-GANG DIMMER SWITCHES FOR CONTROL OF ART GALLERY LTG. FROM LEFT TO RIGHT, THE SWITCHES CONTROL THE LTG AS FOLLOWS:  
TOGGLE 1 - ZONE A DOWN LIGHTS (CKT C2B-24)  
TOGGLE 2 - ZONE B DOWN LIGHTS (CKT C2B-24)  
TOGGLE 3 - ZONE C DOWN LIGHTS (CKT C2B-25)  
TOGGLE 4 - ZONE D COVE LIGHTS (CKT C2-8)  
DIMMER 1 - ZONE E TRACK LIGHTS (WEST HALF) (CKT C2B-32)  
DIMMER 2 - ZONE F TRACK LIGHTS (EAST HALF) (CKT C2B-32)  
PROGRAM ALL CIRCUITS ABOVE INTO LUTRON CONTROLLER PROGRAM COORDINATE WITH OWNER.
25. MAINTAIN EXISTING LOCAL CONTROLS AND EXTEND EXISTING CIRCUITS THROUGH RELAY PANEL AS FOLLOWS:  
CKT C2B-24 THRU RELAY PANEL RLP1-6  
CKT C2B-25 THRU RELAY PANEL RLP1-7  
CKT C2-8 THRU RELAY PANEL RLP1-8  
CKT C2B-32 THRU RELAY PANEL RLP1-9  
PROGRAM ALL CIRCUITS ABOVE INTO LUTRON CONTROLLER PROGRAM COORDINATE WITH OWNER.
26. ALL LIGHTING IN THIS ROOM EXISTING TO REMAIN.
27. REMOVE EXISTING (3) THREE FLUORESCENT 2'X4' FIXTURES AND REPLACE WITH (2) TWO TYPE RX3 LED FIXTURES AS SHOWN. 2X4'S SHALL BE DIMMED BY LEFT-MOST DIMMER.
28. REMOVE EXISTING FLUORESCENT DOWNLIGHTS AND REPLACE WITH TYPE RX4 LED RETROFIT DOWNLIGHTS. REMOVE FROM EXISTING CIRCUIT AND RECONNECT TO SAME CIRCUIT AS TYPE RX3 WITHIN ROOM. DOWNLIGHTS SHALL BE DIMMED BY CENTER DIMMER.
29. REMOVE EXISTING FLUORESCENT LINEAR FIXTURES IN COVE AND REPLACE WITH FIXTURE TYPE CX8 IN QUANTITY / LENGTH AS SHOWN. REMOVE FROM EXISTING CKT AND RECONNECT TO SAME CKT AS TYPE RX3 IN ROOM. COVE LIGHTS SHALL BE DIMMED BY RIGHT-MOST DIMMER.
30. REMOVE EXISTING (2) TWO OCCUPANCY SENSORS AND (2) ON/OFF CONTROL OF ALL LIGHTING WITHIN ROOM. AND (3) THREE LOW VOLTAGE DIMMERS FOR CONTROL OF DIFFERENT ZONES WITHIN ROOM AS DESCRIBED IN CODED NOTES 27, 28 & 29.
31. EXISTING PENDANT FIXTURES TO REMAIN. PENDANTS TO BE DIMMED BY LEFT-MOST DIMMER.
32. REMOVE EXISTING FLUORESCENT LINEAR FIXTURES IN COVE AND REPLACE WITH FIXTURE TYPE CX8 IN QUANTITY / LENGTH AS SHOWN. COVE LIGHTS SHALL BE DIMMED BY RIGHT-MOST DIMMER.
33. REMOVE EXISTING (3) THREE TOGGLE SWITCHES. REPLACE WITH (1) ONE OCCUPANCY SENSOR SWITCH FOR LOCAL LTG CONTROL. IF ALTERNATE #2 IS ACCEPTED, REMOVE TWO LOW VOLTAGE DIMMER SWITCHES FOR CONTROL OF DIFFERENT ZONES WITHIN ROOM AS DESCRIBED IN CODED NOTES 31 AND 32.
34. REMOVE EXISTING FLUORESCENT 2'X4' FIXTURES AND REPLACE WITH TYPE RX3 LED FIXTURES AS SHOWN 2X4'S TO BE DIMMED BY LEFT-MOST DIMMER.
35. REMOVE EXISTING FLUORESCENT 2'X4' FIXTURES AND REPLACE WITH TYPE RX3 FIXTURES AS SHOWN.
36. REMOVE EXISTING FLUORESCENT LINEAR FIXTURES IN COVE AND REPLACE WITH FIXTURE TYPE CX8 IN QUANTITY / LENGTH AS SHOWN.
37. REMOVE EXISTING FLUORESCENT DOWNLIGHTS AND REPLACE WITH TYPE RX4 LED RETROFIT DOWNLIGHTS (TYPICAL).
38. REMOVE CKT 2A1-10 FROM RELAY PANEL CONNECTED LTG TO BE CONTROLLED BY NEW OCCUPANCY SENSORS AND LOCAL SWITCHES.
39. ALL OCCUPANCY SENSORS AND LOCAL SWITCHES SHALL BE WIRELESS.
40. BASE BID: PROVIDE WIRELESS ON/OFF PUSHBUTTON SWITCH FOR LOCAL CONTROL OF LIGHTING. IF ALTERNATE #2 IS ACCEPTED, PROVIDE WIRELESS ON/OFF/DIMMER SWITCH HERE.
41. BASE BID: NO FIXTURE CHANGE. IF ALTERNATE #2 IS ACCEPTED, REMOVE ALL EXISTING FLUORESCENT 2'X4' FIXTURES IN THIS AREA AND PROVIDE/REPLACE WITH LED 2'X4' FIXTURE TYPE RX3 (NEW FIXTURE QUANTITY AND LAYOUT TO MATCH EXISTING).
42. BASE BID: REMOVE LOCAL TOGGLE SWITCHES) AND PROVIDE OCCUPANCY SENSOR SWITCH FOR LOCAL LTG CONTROL. IF ALTERNATE #2 IS ACCEPTED, REMOVE LOCAL TOGGLE SWITCHES), AND PROVIDE WIRELESS OCCUPANCY SENSOR AND DIMMER SWITCH FOR LOCAL LTG CONTROL.
43. REMOVE EXISTING TOGGLE SWITCH, AND PROVIDE/REPLACE WITH OCCUPANCY SENSOR SWITCH FOR LOCAL LTG CONTROL.
44. BASE BID: NO FIXTURE CHANGE. IF ALTERNATE #2 IS ACCEPTED, REMOVE EXISTING FLUORESCENT 2'X4' AND DOWNLIGHT LIGHT FIXTURES, AND PROVIDE LED 2'X4' FIXTURE TYPE RX3 (NEW FIXTURE QUANTITY AND LAYOUT TO MATCH EXISTING) IN QUANTITY AND LAYOUT AS SHOWN.
45. BASE BID: NO LOCAL CONTROLS CHANGE. IF ALTERNATE #2 IS ACCEPTED, PROVIDE WIRELESS DIMMER SWITCH FOR LOCAL LTG CONTROL.
46. BASE BID: REMOVE EXISTING TOGGLE SWITCHES) AND PROVIDE WIRELESS ON/OFF PUSHBUTTON SWITCH FOR LOCAL CONTROL OF LIGHTING THROUGHOUT "OPEN OFFICE-FIN" (RM 207). IF ALTERNATE #2 IS ACCEPTED, FOLLOW BASE BID DIRECTIONS, EXCEPT PROVIDE WIRELESS ON/OFF/DIMMER SWITCH IN LEU OF ON/OFF SWITCH.
47. REMOVE EXISTING FLUORESCENT 2'X4' FIXTURES AND DOWNLIGHTS, AND PROVIDE FIXTURE TYPES RX3 AND RX4 IN QUANTITY AND LAYOUT AS SHOWN. REMOVE EXISTING CKT 2C1-14 BACK TO PANEL. ALL FIXTURE IN THIS AREA TO BE FED BY EXISTING CKT 2C1-9.
48. REMOVE EXISTING TOGGLE SWITCHES AND PROVIDE WIRELESS ON/OFF/DIMMER SWITCH FOR LOCAL CONTROL OF LTG THROUGHOUT "OPEN OFFICE-FINANCE" (RM 207).
49. PROVIDE NEW LUTRON RELAY PANEL (RLP11) WITH 16 RELAYS IN ELECTRICAL CLOSET IN CEO SUITE. PANEL AND CONNECTED LOADS TO BE PROGRAMMED INTO LUTRON LIGHTING CONTROL SYSTEM FOR BUILDING. REFER TO SHEET ED.17 FOR RELAY PANEL SCHEDULE.

**Sca**  
SchooleyCaldwell Associates  
architects engineers planners interior designers  
300 Marconi Boulevard T 614-628-0300  
Columbus OH 43215 F 614-628-0311  
schooleycaidwell.com

**g**  
GUND PARTNERSHIP  
ARCHITECTURE | PLANNING  
47 THORNDIKE STREET  
CAMBRIDGE, MA 02141  
617 1250 8800  
617 577 9614 FAX

Consultants:  
Structural  
SMBH  
1788 Cedar Street, Suite 200  
Columbus, Ohio 43215-1088  
Mechanical, Electrical, Plumbing & Fire Protection  
Heapy Engineering  
4430 W. Sandusky Lane  
Dayton, OH 45424-1310  
Landscape  
MKSK  
251 South Willow Alley  
Columbus, Ohio 43216

**COLUMBIAN METROPOLITAN LIBRARY**  
Main Branch  
96 South Grant Avenue  
Columbus, OH 43215

Drawing Issue Dates  
Record Document  
October 28, 2016

REVISIONS:

REV NO	DESCRIPTION	DATE
60	PHASE 2	5/24/18
61	PHASE 3	6/13/18



SECOND FLOOR LIGHTING PLAN C

**EL1.12C**  
KORDA | CML  
09/22/2017 | 2017-5008

**KORDA**  
KORDA, NEMETH ENGINEERING  
1650 WATERMARK DRIVE  
SUITE 200  
COLUMBUS, OHIO 43215  
DRAWN BY: Author  
DESIGNED BY: PSG  
CHECKED BY: CHECKER  
PROJECT NUMBER: 2017-5008