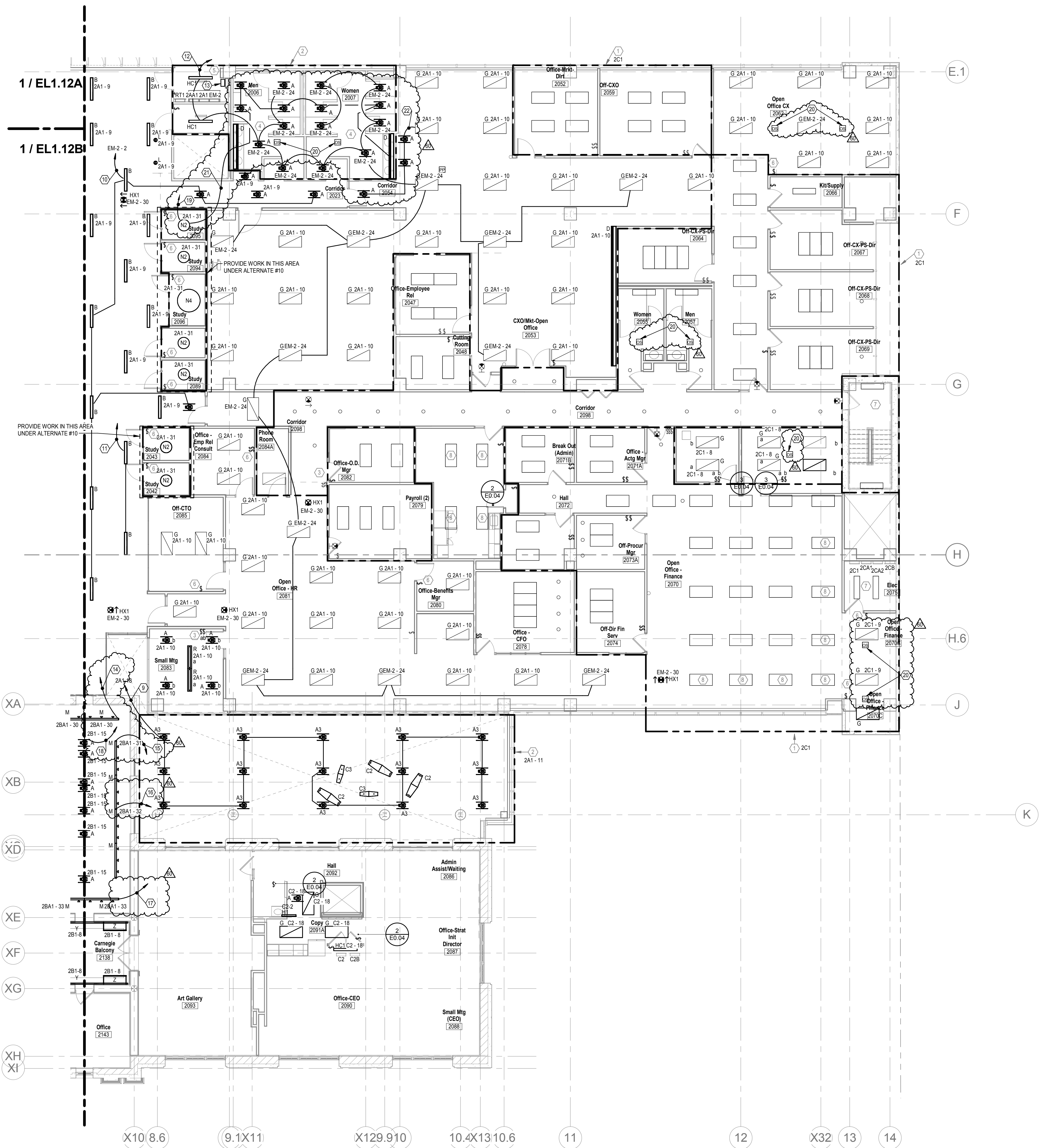


C:\Users\moncolove\Desktop\Revit Central Files\17-175008-CML - Main Branch ELEC.rvt  
5/24/2018 9:14:07 AM



**SECOND FLOOR LIGHTING PLAN C**  
SCALE: 1/8" = 1'-0"

**GENERAL NOTES**

A. COORDINATE LOCATION ALL LIGHTING WITH ARCHITECTURAL REFLECTED CEILING PLANS

**NOTES**

1. ALL EXISTING LUMINAIRES IN THIS AREA SHALL BE WIRED TO THIS DESIGNATED PANEL UNLESS OTHERWISE NOTED. NIGHT LIGHTING AND EGRESS LUMINAIRES SHALL BE CONTROLLED SEPARATELY.
2. ALL LUMINAIRES IN THIS AREA SHALL BE WIRED TO THIS DESIGNATED PANEL UNLESS OTHERWISE NOTED. NIGHT LIGHTING AND EGRESS LUMINAIRES SHALL BE CONTROLLED SEPARATELY.
3. PROVIDE LUTRON NOV-A-T-10 10V WALLBOX DIMMERS AND CEILING MOUNTED OCCUPANCY SENSOR. TYPICAL FOR MEETING ROOMS. COORDINATE EXACT REQUIREMENTS AND LOCATIONS WITH TEC STUDIO PRIOR TO ANY WORK BEING DONE.
4. PROVIDE LUTRON DUAL-TECH CEILING MOUNTED OCCUPANCY SENSORS. TYPICAL COORDINATE EXACT REQUIREMENTS WITH TEC STUDIO PRIOR TO ANY WORK BEING DONE.
5. LOCATION OF RELAY PANEL. COORDINATE EXACT REQUIREMENTS WITH TEC STUDIO PRIOR TO ANY WORK BEING DONE.
6. FOR PRIVATE OFFICE, PROVIDE LUTRON CEILING MOUNTED RF VACANCY SENSOR AND LUTRON RF WALL SWITCH FOR CONTROL. TYPICAL FOR OFFICES. COORDINATE EXACT REQUIREMENTS WITH TEC STUDIO PRIOR TO ANY WORK BEING DONE.
7. NO LIGHTING WORK IN THIS AREA. MAINTAIN EXISTING CIRCUITS AND CONTROLS.
8. LUMINAIRE SHALL BE REMOVED STORED AND INSTALLED AFTER CEILING WORK IN THIS AREA. CLEAN, RE-LAMP, BALLAST AND INSTALL FIXTURE IN SAME LOCATION. PROVIDE DISCONNECT FOR FOOT LUMINAIRES PER NEC REQUIREMENTS.

**GENERAL NOTES**

- B. WHEN REMOVING PORTIONS OF CKTS, MAINTAIN REMAINING LTG ON CKT. PROVIDE NEW SCHEMATIC THROUGH RELAY WHERE NECESSARY.
- C. CIRCUITING DESCRIBED IN NOTES INTENDED AS LABELED ON DRAWINGS OR CIRCUITS OR RELAY NUMBERS DIFFERENT FROM DRAWINGS. CONTRACTOR SHALL MARK-UP ON AS-BUILT DRAWINGS FOR OWNER.

**CODED NOTES**

9. REMOVE GROUP OF LTG FROM EXISTING CKT 2A1-11 & RE-CKT AS SHOWN. EXTEND CKT 2A1-18 THRU RELAY DRUPS-1.
10. REMOVE GROUP OF LTG FROM EXISTING CKT EM-2-24 & RE-CKT AS SHOWN. EXTEND CKT EM-2 THRU RELAY DRUPS-6.
11. REMOVE GROUP OF LTG FROM EXISTING CKT & CONNECT TO ADJACENT CKT 2A1-9.
12. MAINTAIN EXISTING CKT EM-2-24. REMOVE CKT FROM RELAY PANEL & LEAVE CKT HOT.
13. PROVIDE NEW DIMMING RELAY PANEL (LUTRON: ESN) "DRPL3". FOR NORMAL LTG ON 2ND FLOOR. CKT THRU RELAY DRUPS-6.
14. EXTEND CKT 2B1-30 THRU RELAY RLP6-11. PROGRAM AS TRACK LTG ZONE FOR LOCAL ROOM IN LUTRON CONTROLLER PROGRAM.
15. EXTEND CKT 2B1-31 THRU RELAY RLP6-12. PROGRAM AS TRACK LTG ZONE FOR LOCAL ROOM IN LUTRON CONTROLLER PROGRAM.
16. EXTEND CKT 2B1-32 THRU RELAY RLP6-13. PROGRAM AS TRACK LTG ZONE FOR LOCAL ROOM IN LUTRON CONTROLLER PROGRAM.
17. EXTEND CKT 2B1-33 THRU RELAY RLP6-14. PROGRAM AS TRACK LTG ZONE FOR LOCAL ROOM IN LUTRON CONTROLLER PROGRAM.
18. EXTEND CKT 2B1-15 THRU RELAY RLP6-1. PROGRAM AS DOWNLIGHTING ZONE FOR LOCAL ROOM IN LUTRON CONTROLLER PROGRAM.
19. REMOVE CIRCUIT 2A1-31 FROM RELAY PANEL (RLP2-10).
20. EXISTING OCCUPANCY SENSOR TO REMAIN. SHOWN FOR REFERENCE ONLY.
21. REMOVE NORMAL LIGHTING IN 2008 AND 2007 FROM CIRCUIT 2A1-9 AND RE-CIRCUIT TO ADJACENT CIRCUIT 2A1-31 AS SHOWN.
22. REMOVE GROUP OF LIGHTING FROM CIRCUIT 2A1-9 AND RE-CIRCUIT TO ADJACENT CIRCUIT 2A1-10 AS SHOWN.



**SchooleyCaldwell Associates**  
architects engineers planners interior designers

300 Marconi Boulevard T 614-628-0300  
Columbus OH 43216 F 614-628-0311  
schooley@scacw.com



**GUNDPARTNERSHIP**

ARCHITECTURE | PLANNING  
47 THORNDIKE STREET  
CAMBRIDGE, MA 02141  
617 250 6600  
617 577 9614 FAX

Consultants:

Structural

SMBH

Mechanical, Electrical, Plumbing & Fire Protection

Heavy Engineering

Landscaping

MKS&K

COLUMBUS METROPOLITAN LIBRARY



Main Branch

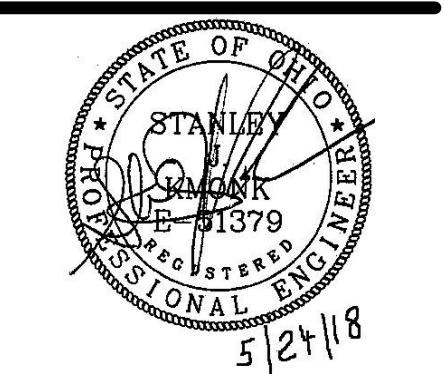
96 South Grant Avenue  
Columbus, OH 43215

Drawing Issue Dates

Record Document  
October 28, 2016

REVISIONS:

REV NO	DESCRIPTION	DATE
60	PHASE 2	5/24/18



SECOND FLOOR LIGHTING PLAN C

**EL1.12C**

KORDA | CML  
09/22/2017 | 2017-5008

**KORDA**  
KORDA, NEWETH ENGINEERING  
1650 WATERMARK DRIVE  
SUITE 200  
COLUMBUS, OHIO 43215  
DRAWN BY: J. ...  
DESIGNED BY: P.S.G.  
CHECKED BY: CHECKER  
PROJECT NUMBER: 2017-5008