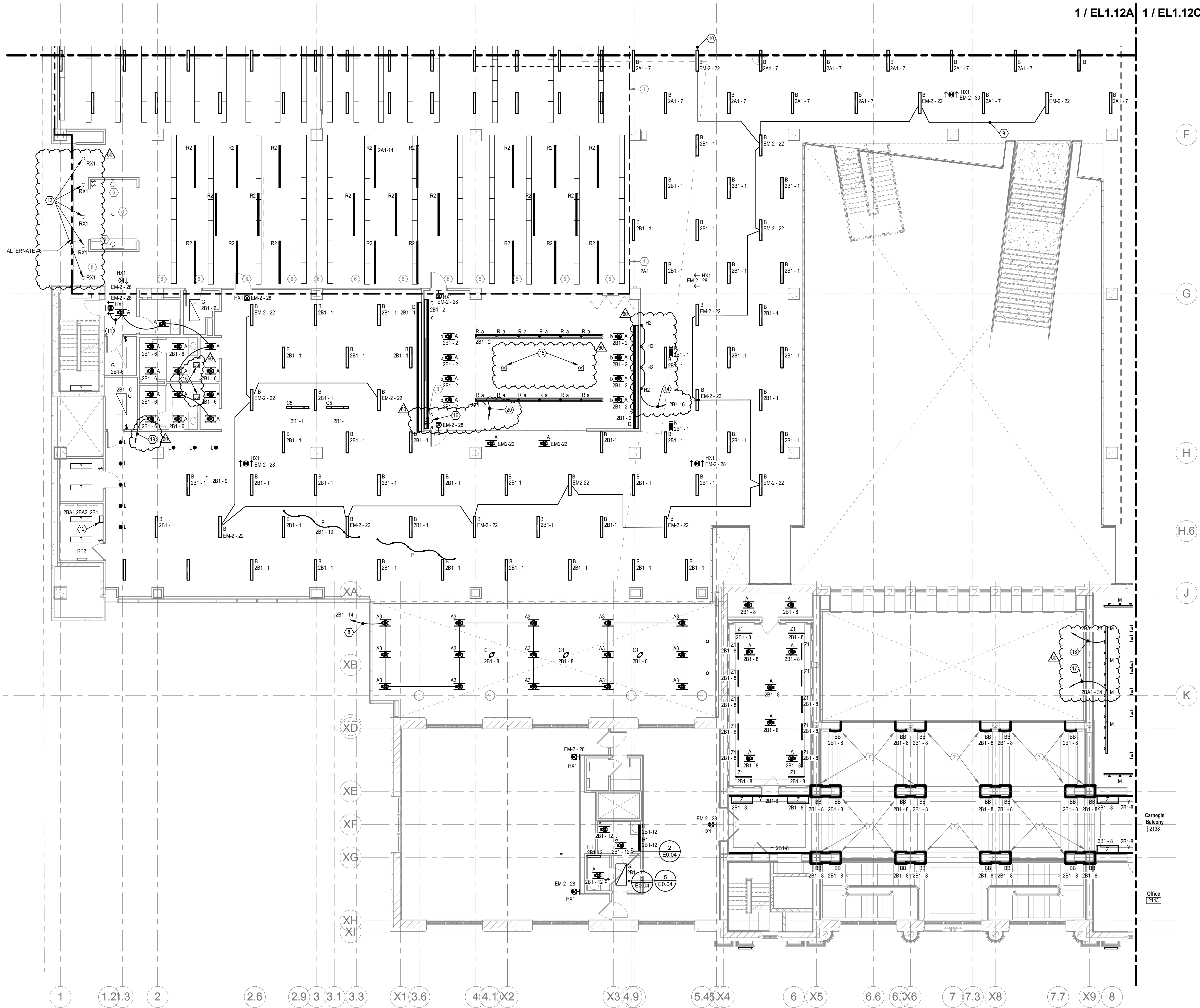


C:\Users\jmorlock\OneDrive\Desktop\Revit Central Files\17-175008-CML - Main Branch ELEC.rvt
5/24/2018 9:13:54 AM



GENERAL NOTES
 A. COORDINATE LOCATION ALL LIGHTING WITH ARCHITECTURAL REFLECTED CEILING PLANS
 B. ALL EXISTING EXTL LUMINAIRES SHALL BE CIRCUITED TO THE NEW EM2 PANELBOARD PROVIDED IN ROOM 205 IN AREA "C".

NOTES
 1. ALL EXISTING LUMINAIRES IN THIS AREA SHALL BE WIRED TO THIS DESIGNATED PANEL UNLESS OTHERWISE NOTED. NIGHT LIGHTING AND EGRESS LUMINAIRES SHALL BE CONTROLLED SEPARATELY.
 2. ALL LUMINAIRES IN THIS AREA SHALL BE WIRED TO THIS DESIGNATED PANEL UNLESS OTHERWISE NOTED. NIGHT LIGHTING AND EGRESS LUMINAIRES SHALL BE CONTROLLED SEPARATELY.
 3. PROVIDE LUTRON NOVA-T 0-10V WALLBOX DIMMERS AND CEILING MOUNTED OCCUPANCY SENSOR, TYPICAL FOR MEETING ROOMS. COORDINATE EXACT REQUIREMENTS AND LOCATIONS WITH THE STUDIO PRIOR TO ANY WORK BEING DONE.
 4. NO LIGHTING WORK IN THIS AREA. MAINTAIN EXISTING CIRCUITS AND CONTROLS.
 5. THE EXISTING CIRCUIT SERVING THIS ROW OF EXISTING LUMINAIRES TO REMAIN IS FROM A PANELBOARD BEING REMOVED. INTERCEPT THE CIRCUIT AND PROVIDE A NEW 277 VOLT-20 AMP CIRCUIT & BREAKER IN PANELBOARD 2A1. CONTROL LIGHTING THROUGH THE NEW LUTRON RELAY PANEL.
 6. THIS EXISTING ROW OF LUMINAIRES TO REMAIN. MAINTAIN EXISTING CIRCUITS AND CONTROL THROUGH THE EXISTING CONTACTOR.
 7. COORDINATE ALL MOUNTING LOCATIONS WITH ARCHITECT PRIOR TO ROUGH-IN. REFER TO ARCHITECTURAL DRAWINGS FOR ADDITIONAL REQUIREMENTS.

GENERAL NOTES
 C. WHEN REMOVING PORTIONS OF CKTS, MAINTAIN REMAINING LTG ON CKT. PROVIDE NEW HOME-RUN (THRU RELAY PANEL) WHERE NECESSARY.
 D. CIRCUITING DESCRIBED IN NOTES INTENDED AS LABELED ON DRAWINGS OR CIRCUITS OR RELAY NUMBERS DIFFERENT FROM DRAWINGS. CONTRACTOR SHALL MARK-UP ON AS-BUILT DRAWINGS FOR OWNER.

CODED NOTES
 8. REMOVE GROUP OF LTG FROM EXISTING CKT 2B1-8 & RE-CKT AS SHOWN. EXTEND CKT THRU RELAY RLP6-1. LTG TO HAVE DIMMING CONTROL.
 9. MAINTAIN EXISTING CKT AS SHOWN. GROUPING SHOWN FOR CLARITY.
 10. CKT CONTINUES TO LTG IN ADJACENT SPACE.
 11. REMOVE GROUP OF LTG FROM EXISTING CKT EM-2-22 & CONNECT TO ADJACENT CKT AS SHOWN.
 12. PROVIDE NEW DIMMING RELAY PANEL (LUTRON: ESN: "DRIP2" FOR NORMAL LTG ON 2ND FLOOR. CKT THRU ESN TO PROVIDE POWER TO PANELS.
 13. REPLACE EXISTING DOWNLIGHT WITH LED RETROFIT DOWNLIGHT. REFER TO LIGHTING FIXTURE SCHEDULE ON E0.17 FOR SPECIFICATION OF RX1.
 14. REMOVE FIXTURES FROM CKT 2B1-1. PROVIDE NEW BRANCH CKT 2B1-16. EXTEND CKT THRU RELAY RLP6-10 AND PROGRAM AS SEPARATE LIGHTING ZONE IN LUTRON CONTROLLER PROGRAM.
 15. EXISTING OCCUPANCY SENSOR TO REMAIN. SHOWN FOR REFERENCE ONLY.
 16. EXISTING 3 GANG BANK OF SWITCHES CONSISTING OF TWO (2) COMBO DIMMER/SWITCH/EGG SENSORS FOR ZONES A AND B, AND ONE (1) TOGGLE SWITCH FOR ZONE C. REPLACE WITH TWO (2) LOW VOLTAGE DIMMER/SWITCHES FOR ZONES A AND B MAINTAIN TOGGLE FOR ZONE C. TURN OVER DEVICES REMOVED TO OWNER.
 17. EXTEND CKT 2B1-34 THRU RELAY RLP6-15. PROGRAM AS TRACK LTG ZONE FOR LOCAL ROOM IN LUTRON CONTROLLER PROGRAM.
 18. EXTEND CKT 2B1-35 THRU RELAY RLP6-16. PROGRAM AS TRACK LTG ZONE FOR LOCAL ROOM IN LUTRON CONTROLLER PROGRAM.
 19. REMOVE CIRCUIT 2B1-6 FROM RELAY PANEL (RLP6-3).
 20. REMOVE CKT 2B1-2 FROM RELAY PANEL (RLP6-2).



300 Marconi Boulevard T 614-628-0300
 Columbus OH 43216 F 614-628-0311
 schooley@scacw.com



ARCHITECTURE | PLANNING
 47 THORNDIKE STREET
 CAMBRIDGE, MA 02141
 617 250 6600
 617 577 9614 FAX

Consultants:
 Structural
SMBH
 1700 Upper Road, Suite 200
 Columbus, Ohio 43215-1038
 Mechanical, Electrical, Plumbing & Fire
 Protection
Heavy Engineering
 440 W. Southern Lane
 Dayton, Ohio 45424-1310
 Landscape
MKSK
 402 South Ludlow Alley
 Columbus, Ohio 43215

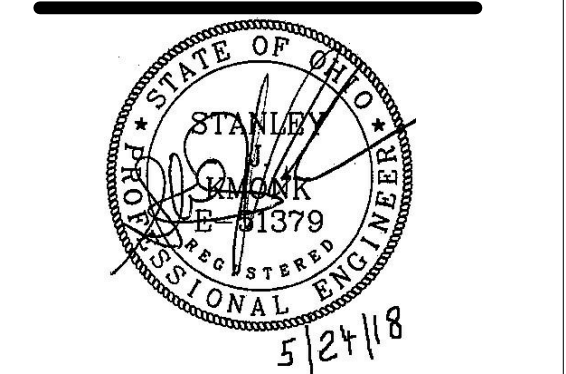


Main Branch
 96 South Grant Avenue
 Columbus, OH 43215

Drawing Issue Dates
 Record Document
 October 28, 2016

REVISIONS:

REV NO	DESCRIPTION	DATE
60	PHASE 2	5/24/18



SECOND FLOOR LIGHTING
 PLAN B

EL1.12B
 KORDA | CML
 09/22/2017 | 2017-5008

SECOND FLOOR LIGHTING PLAN B
 SCALE: 1/8" = 1'-0"

KORDA
 KORDA, NEWETH ENGINEERING
 1650 WATERMARK DRIVE
 SUITE 200
 COLUMBUS, OHIO 43215
 DRAWN BY: PEG
 DESIGNED BY: PEG
 CHECKED BY: CHECKER
 PROJECT NUMBER: 2017-5008