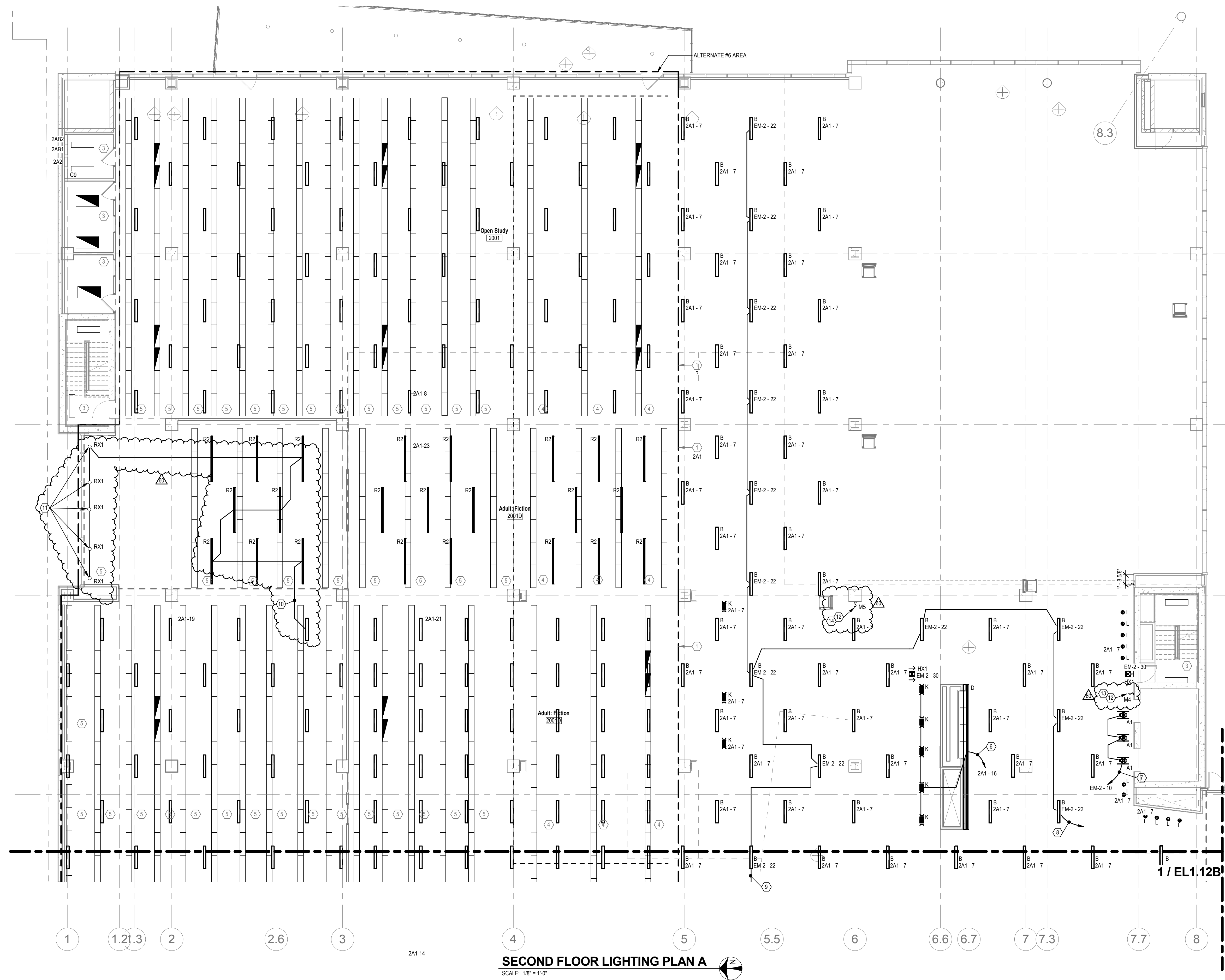


C:\Users\jmorco\OneDrive\Desktop\Revit\Central Files\17-175008-CML - Main Branch ELEC.rvt
5/24/2018 9:13:42 AM



SECOND FLOOR LIGHTING PLAN A
SCALE: 1/8" = 1'-0"

GENERAL NOTES

A. COORDINATE LOCATION ALL LIGHTING WITH ARCHITECTURAL REFLECTED CEILING PLANS
B. ALL EXISTING EXHL LUMINAIRES SHALL BE CIRCUITED TO THE NEW EM-2 PANELBOARD PROVIDED IN ROOM 206 IN AREA 'C'.

NOTES

- ALL EXISTING LUMINAIRES IN THIS AREA SHALL BE WIRED TO THIS DESIGNATED PANEL UNLESS OTHERWISE NOTED. NIGHT LIGHTING AND EGRESS LUMINAIRES SHALL BE CONTROLLED SEPARATELY.
- ALL LUMINAIRES IN THIS AREA SHALL BE WIRED TO THIS DESIGNATED PANEL UNLESS OTHERWISE NOTED. NIGHT LIGHTING AND EGRESS LUMINAIRES SHALL BE CONTROLLED SEPARATELY.
- NO LIGHTING WORK IN THIS AREA. MAINTAIN EXISTING CIRCUITS AND CONTROLS.
- THE EXISTING CIRCUIT SERVING THIS ROW OF EXISTING LUMINAIRES TO REMAIN IS FROM A PANELBOARD BEING REMOVED. INTERCEPT THE CIRCUIT AND PROVIDE A NEW 277 VOLT 20 AMP CIRCUIT & BREAKER IN PANELBOARD 2A1. CONTROL LIGHTING THROUGH THE NEW LUTRON RELAY PANEL.
- THIS EXISTING ROW OF LUMINAIRES TO REMAIN. MAINTAIN EXISTING CIRCUITS AND CONTROL THROUGH THE EXISTING CONTACTOR.

GENERAL NOTES

C. WHEN REMOVING PORTIONS OF CKTS, MAINTAIN REMAINING LTG ON CKT. PROVIDE NEW HOME-RUN THRU RELAY PANEL WHERE NECESSARY.

D. CIRCUITING DESCRIBED IN NOTES INTENDED AS LABELED ON DRAWINGS OF CIRCUITS OR RELAY NUMBERS DIFFERENT FROM DRAWINGS. CONTRACTOR SHALL MARK UP ON AS-BUILT DRAWINGS FOR OWNER.

CODED NOTES

- REMOVE GROUP OF LTG FROM EXISTING CKT 2A1-7 & RE-CKT AS SHOWN. EXTEND CKT 2A1-16 THRU RELAY RLP2-11.
- REMOVE GROUP OF LTG FROM EXISTING CKT EM-2-22 & RE-CKT AS SHOWN. DO NOT EXTEND THRU RELAY PANEL.
- MAINTAIN EXISTING CKT EM-2-22 THRU RELAY RLP2-1. GROUPING SHOWN FOR CLARITY.
- CKT CONTINUES TO LTG IN ADJACENT SPACE.
- REMOVE GROUP OF LIGHTING FROM EXISTING CIRCUIT 2A1-23 AND RE-CIRCUIT TO ADJACENT CIRCUIT 2A1-19 AS SHOWN.
- REPLACE EXISTING 8" DOWNLIGHT WITH LED Retrofit. REFER TO LIGHTING FIXTURE SCHEDULE ON ED-17 FOR SPECIFICATION OF RX1.
- PROVIDE LUTRON 1-BUTTON MOMENTARY CONTACT SWITCH TO BE 'JANITOR SWITCH' FOR SECOND FLOOR LIGHTING. SWITCH SHALL TURN LIGHTING ON IN 30 MINUTE INCREMENTS UP TO MAX OF 2 HOURS. SWITCH SHALL BE DISABLED DURING NORMAL BUSINESS HOURS. COORDINATE EXACT LOCATION IN FIELD WITH OWNER.
- MOMENTARY CONTACT SWITCH #4
BUTTON SHALL CONTROL LIGHTING CIRCUITS 2A1-7, 2A1-9, 2B1-1, AND 3A1-24.
- MOMENTARY CONTACT SWITCH #4
BUTTON SHALL CONTROL LIGHTING CIRCUITS 2A1-8, 2A1-14, 2A1-19, 2A1-21, AND 2A1-23.



300 Marconi Boulevard T 614-628-0300
Columbus OH 43216 F 614-628-0311
schooley@scacaldwell.com



ARCHITECTURE | PLANNING
47 THORNDIKE STREET
CAMBRIDGE, MA 02141
617 250 8600
617 577 9614 FAX

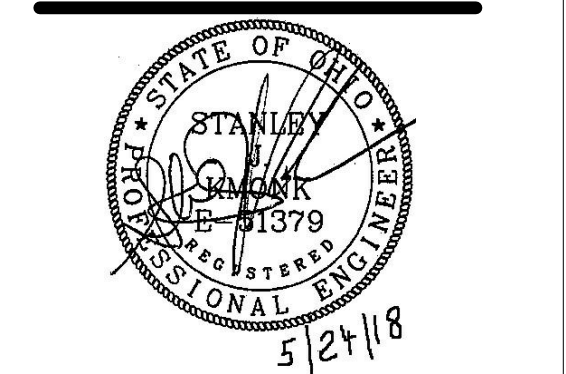
Consultants:
Structural
SMBH
1700 Upper Road, Suite 200
Columbus, Ohio 43215-1038
Mechanical, Electrical, Plumbing & Fire Protection
Heavy Engineering
440 W. Southview Lane
Columbus, Ohio 43215
Landscape
MKS&K
442 South Linn Ave
Columbus, Ohio 43215



Main Branch
96 South Grant Avenue
Columbus, OH 43215

Drawing Issue Dates
Record Document
October 28, 2016

REV NO	DESCRIPTION	DATE
60	PHASE 2	5/24/18



SECOND FLOOR LIGHTING PLAN A

EL1.12A

KORDA | CML
09/22/2017 | 2017-5008

KORDA
KORDA, NEWETH ENGINEERING
1650 WATERMARK DRIVE
SUITE 200
COLUMBUS, OHIO 43215
DRAWN BY: PSQ
DESIGNED BY: PSQ
CHECKED BY: CHECKER
PROJECT NUMBER: 2017-5008