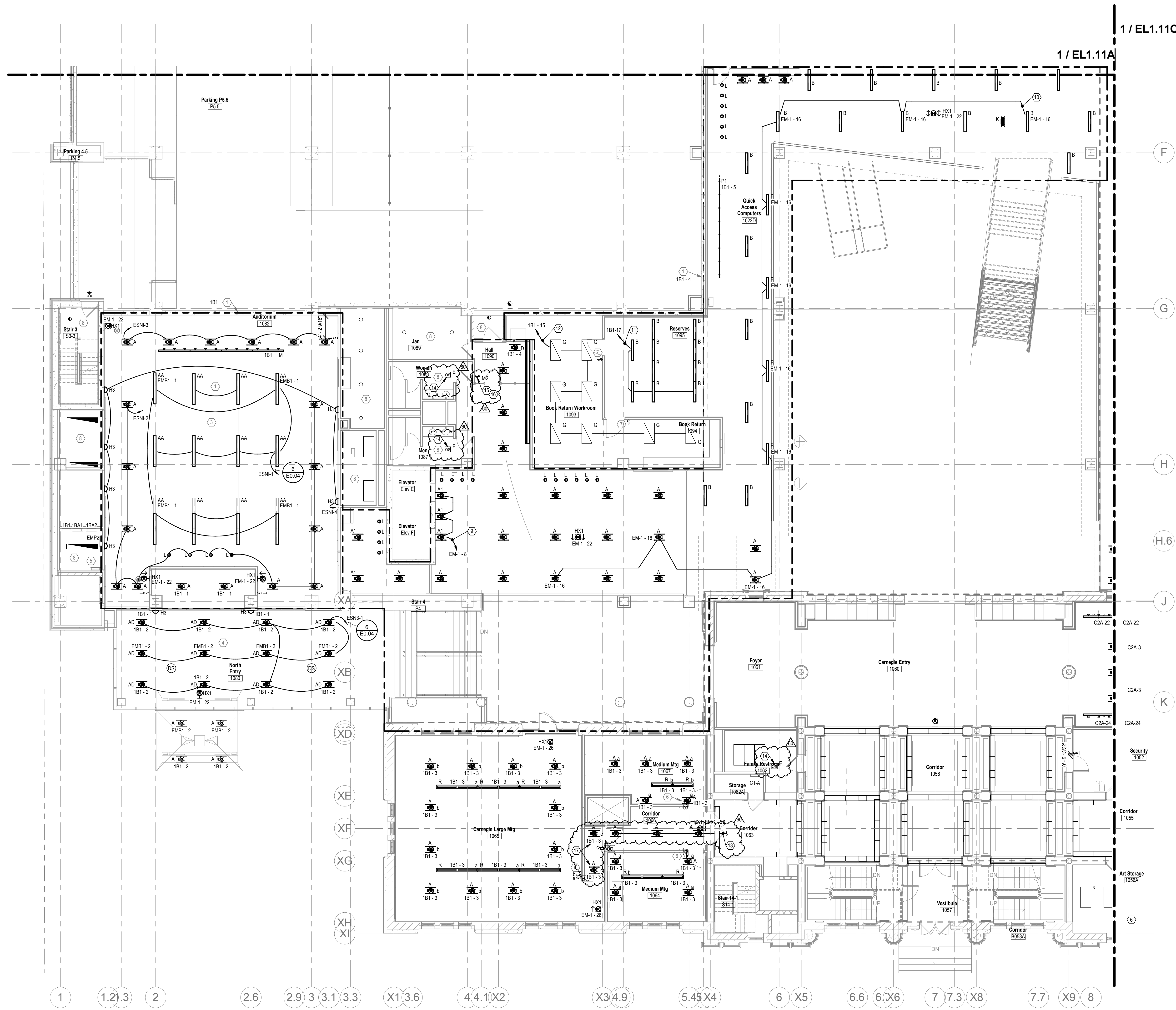


C:\Users\moncolove\Desktop\Revit Central Files\17-175008-CML - Main Branch ELEC.rvt
5/24/2018 9:13:15 AM



GENERAL NOTES
A. COORDINATE LOCATION ALL LIGHTING WITH ARCHITECTURAL REFLECTED CEILING PLANS

NOTES

- ALL LUMINAIRES IN THIS AREA SHALL BE WIRED TO THIS DESIGNATED PANEL UNLESS OTHERWISE NOTED. NIGHT LIGHTING AND EGRESS LUMINAIRES SHALL BE CONTROLLED SEPARATELY.
- PROVIDE DEDICATED CIRCUIT FOR TRACK LIGHTING.
- PROVIDE ONE (1) 10-18V LUTRON ENERGY SAVER NODES, ONE (1) SWITCHED ENERGY SAVER NODE, FOUR (4) 4-BUTTON, RL, OFF DEVICES AND OCC SENSORS. COORDINATE EXACT REQUIREMENTS WITH TEC STUDIO PRIOR TO ANY WORK BEING DONE.
- PROVIDE ONE (1) ECO-SYSTEM LUTRON ENERGY SAVER NODE FOR DAYLIGHT HARVESTING THE SHADE CONTROLS INTO ESN. COORDINATE EXACT REQUIREMENTS WITH TEC STUDIO PRIOR TO ANY WORK BEING DONE.
- LOCATION OF RELAY PANEL. COORDINATE EXACT REQUIREMENTS WITH TEC STUDIO PRIOR TO ANY WORK BEING DONE.
- PROVIDE LUTRON K04-1-1-10V WALL BOX DIMMERS AND CEILING MOUNTED OCCUPANCY SENSOR. TYPICAL FOR MEETING ROOMS. COORDINATE EXACT REQUIREMENTS AND LOCATIONS WITH TEC STUDIO PRIOR TO ANY WORK BEING DONE.
- FOR PRIVATE OFFICE, PROVIDE LUTRON CEILING MOUNTED RF VACANCY SENSOR AND LUTRON RF WALL SWITCH FOR CONTROL. TYPICAL FOR OFFICES. COORDINATE EXACT REQUIREMENTS WITH TEC STUDIO PRIOR TO ANY WORK BEING DONE.
- NO LIGHTING WORK IN THIS AREA. MAINTAIN EXISTING CIRCUITS AND CONTROLS.

GENERAL NOTES

B. WHEN REMOVING PORTIONS OF CKTS. MAINTAIN REMAINING LTG ON CKT. PROVIDE NEW HOME-RUN THRU RELAY PANEL WHERE NECESSARY.

C. CIRCUITING DESCRIBED IN NOTES, INTENDED AS LABELED ON DRAWINGS OF CIRCUITS OR RELAY NUMBERS DIFFERENT FROM DRAWINGS. CONTRACTOR SHALL MARK-UP ON AS-BUILT DRAWINGS FOR OWNER.

CODED NOTES

- REMOVE GROUP OF LTG FROM EXISTING CKT EM-1-16 & RE-CKT AS SHOWN. DO NOT EXTEND CKT THRU RELAY PANEL.
- MAINTAIN EXISTING CKT EM-1-16 THRU RELAY RLP-1-3. GROUP SHOWN FOR CLARITY.
- REMOVE GROUP OF LTG FROM CKT 1B1-4 & RE-CKT AS SHOWN. EXTEND CKT 1B1-5 THRU RELAY RLP-4-5.
- REMOVE LTG IN ROOMS 1063 & 1064 FROM CKT 1B1-4 & RE-CKT AS SHOWN. DO NOT EXTEND THRU RELAY PANEL.
- REMOVE LIGHT FIXTURES IN CORRIDOR 1066 FROM CKT 1B1-3, AND CONNECT TO CKT FOR LIGHTING IN ADJACENT CORRIDOR 1063 (C1-22).
- EXISTING OCCUPANCY SENSOR TO REMAIN. SHOWN FOR OWNER REFERENCE ONLY.
- REPROGRAM EXISTING LUTRON MOMENTARY CONTACT SWITCH TO BE "JANITOR SWITCH" FOR FIRST FLOOR LIGHTING. SWITCH SHALL TURN LIGHTING ON IN 30 MINUTE INCREMENTS UP TO MAX OF 2 HOURS. SWITCH SHALL BE DISABLED DURING NORMAL BUSINESS HOURS.
- MOMENTARY CONTACT SWITCH #2 TOP BUTTON SHALL CONTROL CIRCUITS 1B1-2, 1B1-4, 1B1-8, 2B1-14, AND 1B1-17. ALL OTHER BUTTONS SHALL BE PROGRAMMED NULL.
- CONNECT FIXTURES TO LIGHTING CONTROLS OF ROOM 1065, ZONE C SWITCH. THESE FIXTURES SHALL BE AUTO ON/OFF BY LOCAL OCCUPANCY ALONG WITH OTHER LIGHTING WITHIN ROOM.

FIRST FLOOR LIGHTING PLAN B
SCALE: 1/8" = 1'-0"



300 Marconi Boulevard T 614-628-0300
Columbus OH 43216 F 614-628-0311
schooley@scaldwell.com



ARCHITECTURE | PLANNING
47 THORNDIKE STREET
CAMBRIDGE, MA 02141
617 250 6600
617 577 9614 FAX

Consultants:
Structural
SMBH
1700 South Road, Suite 200
Columbus, Ohio 43215-1038
Mechanical, Electrical, Plumbing & Fire
Protection
Heavy Engineering
1440 W. Southland Lane
Blythe, Ohio 45424-1310
Landscape
MKS&K
442 South Lenoir Ave
Columbus, Ohio 43215

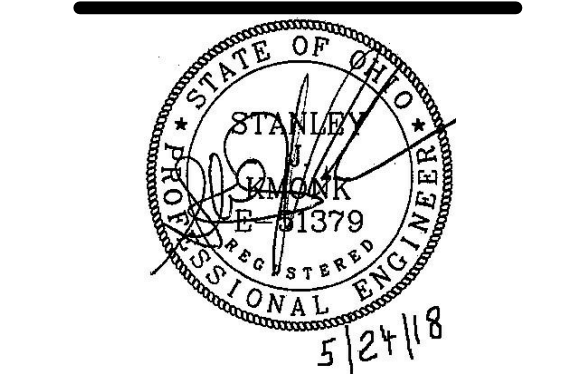


Main Branch
96 South Grant Avenue
Columbus, OH 43215

Drawing Issue Dates
Record Document
October 28, 2016

REVISIONS:

REV NO	DESCRIPTION	DATE
60	PHASE 2	5/24/18



FIRST FLOOR LIGHTING PLAN B

EL1.11B

KORDA | CML

DESIGNED BY: PSB
CHECKED BY: CHECKER
PROJECT NUMBER: 2017-5008

09/22/2017 | 2017-5008

KORDA
KORDA, NEWETT ENGINEERING
1650 WATERMARK DRIVE
SUITE 200
COLUMBUS, OHIO 43215
DRAWN BY: PSB
DESIGNED BY: PSB
CHECKED BY: CHECKER
PROJECT NUMBER: 2017-5008