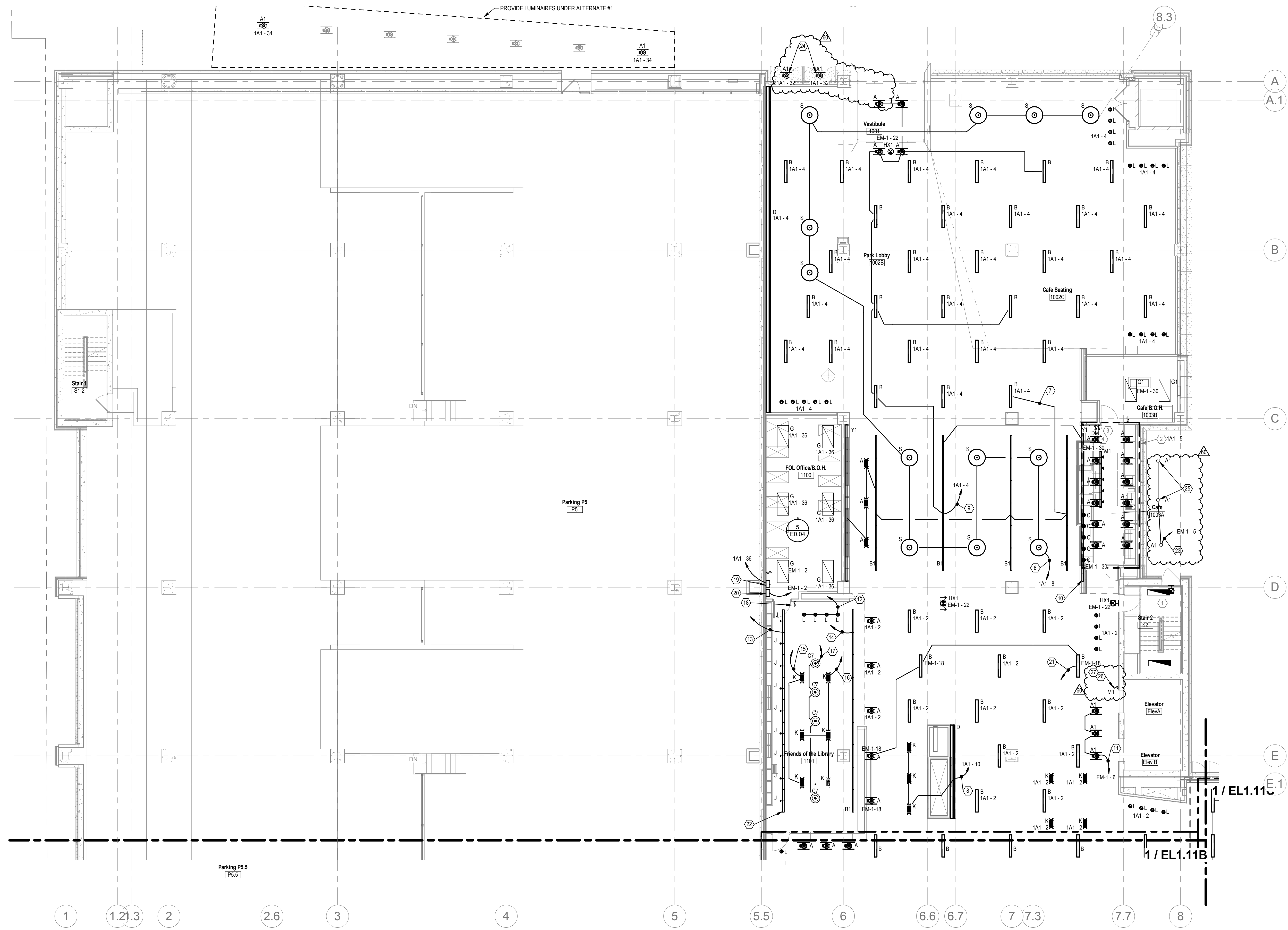


C:\Users\jmorcol\OneDrive\Desktop\Revit Central Files\17-175008-CML - Main Branch ELEC.rvt
5/24/2018 9:13:02 AM



FIRST FLOOR LIGHTING PLAN A
SCALE: 1/8" = 1'-0"

GENERAL NOTES

A. COORDINATE LOCATION ALL LIGHTING WITH ARCHITECTURAL REFLECTED CEILING PLANS

NOTES

- NO LIGHTING WORK IN THIS AREA. MAINTAIN EXISTING CIRCUITS AND CONTROLS.
- ALL LUMINAIRES IN THIS AREA SHALL BE WIRED TO THIS DESIGNATED PANEL UNLESS OTHERWISE NOTED. NIGHT LIGHTING AND EGRESS LUMINAIRES SHALL BE CONTROLLED SEPARATELY.
- PROVIDE LUTRON TWO (2) BUTTON SCENE CONTROL AT THIS LOCATION. CIRCUIT TRACK AND PENDANTS ON SEPARATE RELAY THAN TYPE 'A' DOWNLIGHTS FOR OPEN-CLOSED OPTIONS. COORDINATE EXACT REQUIREMENTS WITH TEC STUDIO PRIOR TO ANY WORK BEING DONE.
- TYPE 'Y' LED COVE. PROVIDE 0-10V WIRING AND LOCAL 0-10V WALL BOX DIMMER GANGED WITH PRE-SET SCENE CONTROL.
- PROVIDE LUTRON SCENE-TOUCH TWO (2) BUTTON SCENE CONTROL HERE. PROVIDE SEPARATE RELAY CONTROL FOR STORE.

GENERAL NOTES

- WHEN REMOVING PORTIONS OF CKTS. MAINTAIN REMAINING LTG ON CKT. PROVIDE NEW HOME-RUN THRU RELAY PANEL WHERE NECESSARY.
- CIRCUITING DESCRIBED IN NOTES INTENDED AS LABELED ON DRAWINGS OF CIRCUITS OR RELAY NUMBERS DIFFERENT FROM DRAWINGS. CONTRACTOR SHALL MARK-UP ON AS-BUILT DRAWINGS FOR OWNER.

CODED NOTES

- REMOVE GROUP OF LTG FROM EXISTING CKT 1A1-2 & 1A1-4 AND RE-CKT AS SHOWN. EXTEND CIRCUIT 1A1-8 THRU RELAY RLP1-9.
- REMOVE GROUP OF LTG FROM EXISTING CKT 1A1-2 & CONNECT TO NEARBY CKT 1A1-4 AS SHOWN.
- REMOVE GROUP OF LTG FROM EXISTING CKT 1A1-2 & RE-CKT AS SHOWN. EXTEND CKT 1A1-14 THRU RELAY RLP1-8.
- REMOVE GROUP OF LTG FROM EXISTING CKT EM-1-18 & RE-CKT AS SHOWN. EXTEND CKT EM-1-4 THRU RELAY RLP1-8.
- REMOVE LIGHT Y1 FROM EXISTING CKT EM-1-30 & RE-CKT AS SHOWN.
- REMOVE GROUP OF LTG FROM EXISTING CKT EM-1-18 & RE-CKT AS SHOWN. DO NOT EXTEND THRU RELAY PANEL.
- FOL ZONE 1. EXTEND CKT EM-1-2/ ZONE 1 THRU RELAY DRP1-1. ZONE TO HAVE DIMMING CONTROL.
- FOL ZONE 2. EXTEND CKT 1A1-36/ ZONE 2 THRU RELAY DRP1-1. NON-DIMMED ZONE.
- FOL ZONE 3. EXTEND CKT 1A1-36/ ZONE 3 THRU RELAY DRP1-2. NON-DIMMED ZONE.
- FOL ZONE 4. EM LTG. EXTEND CKT EM-1-2/ ZONE 4 THRU RELAY DRP1-2. NON-DIMMED ZONE.
- FOL ZONE 4. NORMAL LTG. EXTEND CKT 1A1-36/ ZONE 4 THRU RELAY DRP1-3. NON-DIMMED ZONE.
- FOL ZONE 5. EXTEND CKT 1A1-36/ ZONE 5 THRU RELAY DRP1-4. ZONE TO HAVE DIMMING CONTROL.
- REMOVE EXISTING 2-BUTTON CONTROL STATION & REPLACE WITH 5-BUTTON + DIMMING CONTROL STATION (LUTRON: QSW52-SBRLL-WH).
- PROVIDE ESN (DIMMING RELAY PANEL), "DRP1", FOR NORMAL LTG IN FOL.
- PROVIDE ESN (DIMMING RELAY PANEL), "DRPE1", FOR EMERGENCY LTG IN FOL.
- MAINTAIN EXISTING CKT EM-1-18 THRU RELAY RLP1-4. GROUPING SHOWN FOR CLARITY.
- REMOVE NORMAL LTG IN FOL FROM EXISTING CKT 1A1-2 & RE-CKT AS SHOWN. REMOVE EMERGENCY LTG IN FOL FROM EXISTING CKT EM-1-18 & RE-CKT AS SHOWN.
- REMOVE LIGHT AT CLOSEST TO DOOR FROM STAIRWELL CIRCUIT AND RE-CIRCUIT AS SHOWN. EXTEND CIRCUIT EM-1-5 THRU RELAY RLP1-1.
- CONFIRM THAT LIGHT FIXTURES ARE FED BY CIRCUIT 1A1-32, AND THAT THIS CIRCUIT EXTENDS THROUGH RELAY PANEL RLP1-7. IF NOT, CORRECT TO THESE PARAMETERS.
- REMOVE LIGHTS FROM EXISTING CIRCUIT 1A1-32 AND RE-CIRCUIT AS SHOWN.
- PROVIDE LUTRON 2-BUTTON MOMENTARY CONTACT SWITCH TO BE JANITOR SWITCH FOR FIRST FLOOR LIGHTING. SWITCH SHALL TURN LIGHTING ON IN 30 MINUTE INCREMENTS UP TO MAX OF 2 HOURS. SWITCH SHALL BE DISABLED DURING NORMAL BUSINESS HOURS. COORDINATE EXACT LOCATION IN FIELD WITH OWNER.
- MOMENTARY CONTACT SWITCH # 1. TOP BUTTON SHALL CONTROL CIRCUITS 1A1-2 AND 1A1-4. BOTTOM BUTTON SHALL CONTROL CIRCUITS 1A1-12 AND EM-3-12.



SchooleyCaldwell Associates
architects engineers planners interior designers

300 Marconi Boulevard T 614-628-0300
Columbus OH 43215 F 614-628-0311
schooley@scaldwell.com



ARCHITECTURE | PLANNING
47 THORNDIKE STREET
CAMBRIDGE, MA 02141
617 250 8600
617 577 9614 FAX

Consultants:

Structural
SMBH
1700 Lakes Road, Suite 200
Columbus, Ohio 43219-1038

Mechanical, Electrical, Plumbing & Fire Protection
Heapy Engineering
440 W. Southland Lane
Blythe, Ohio 45424-1310

Landscaping
MKS&K
402 South Union Alley
Columbus, Ohio 43215



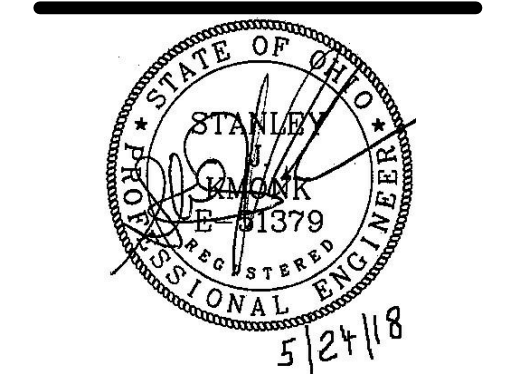
Main Branch

96 South Grant Avenue
Columbus, OH 43215

Drawing Issue Dates

Record Document
October 28, 2016

REV NO	DESCRIPTION	DATE
60	PHASE 2	5/24/18



FIRST FLOOR LIGHTING PLAN A

EL1.11A

KORDA | CML
09/22/2017 | 2017-5008

KORDA
KORDA, NEWETH ENGINEERING
1650 WATERMARK DRIVE
SUITE 200
COLUMBUS, OHIO 43215
DRAWN BY: PSQ
DESIGNED BY: PSQ
CHECKED BY: CHECKER
PROJECT NUMBER: 2017-5008