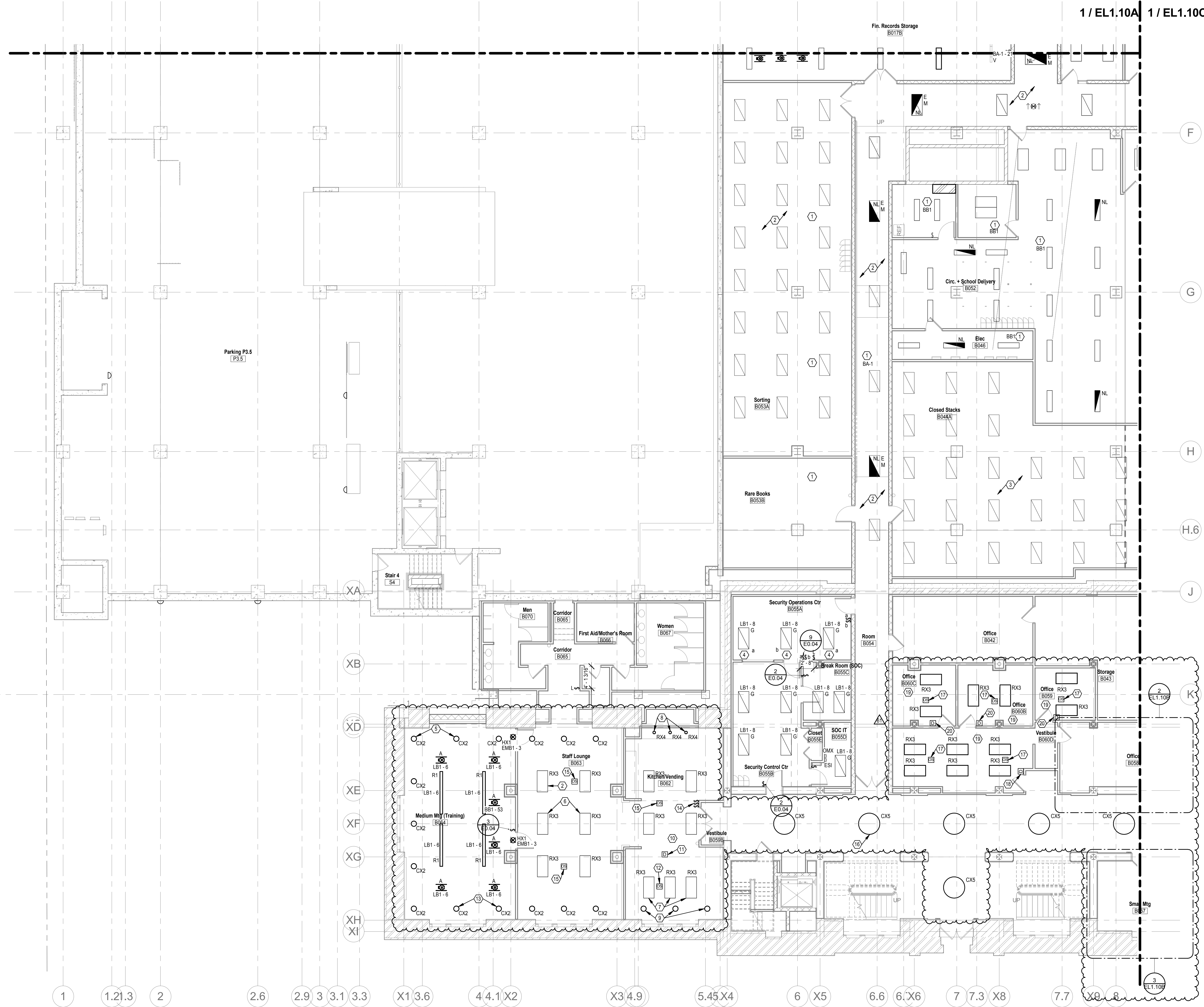


C:\Users\jgallina\Desktop\central files\2017-5008 CML Main Branch\PSG_17-175008-CML - Main Branch ELEC.rvt
6/13/2018 2:06:11 PM

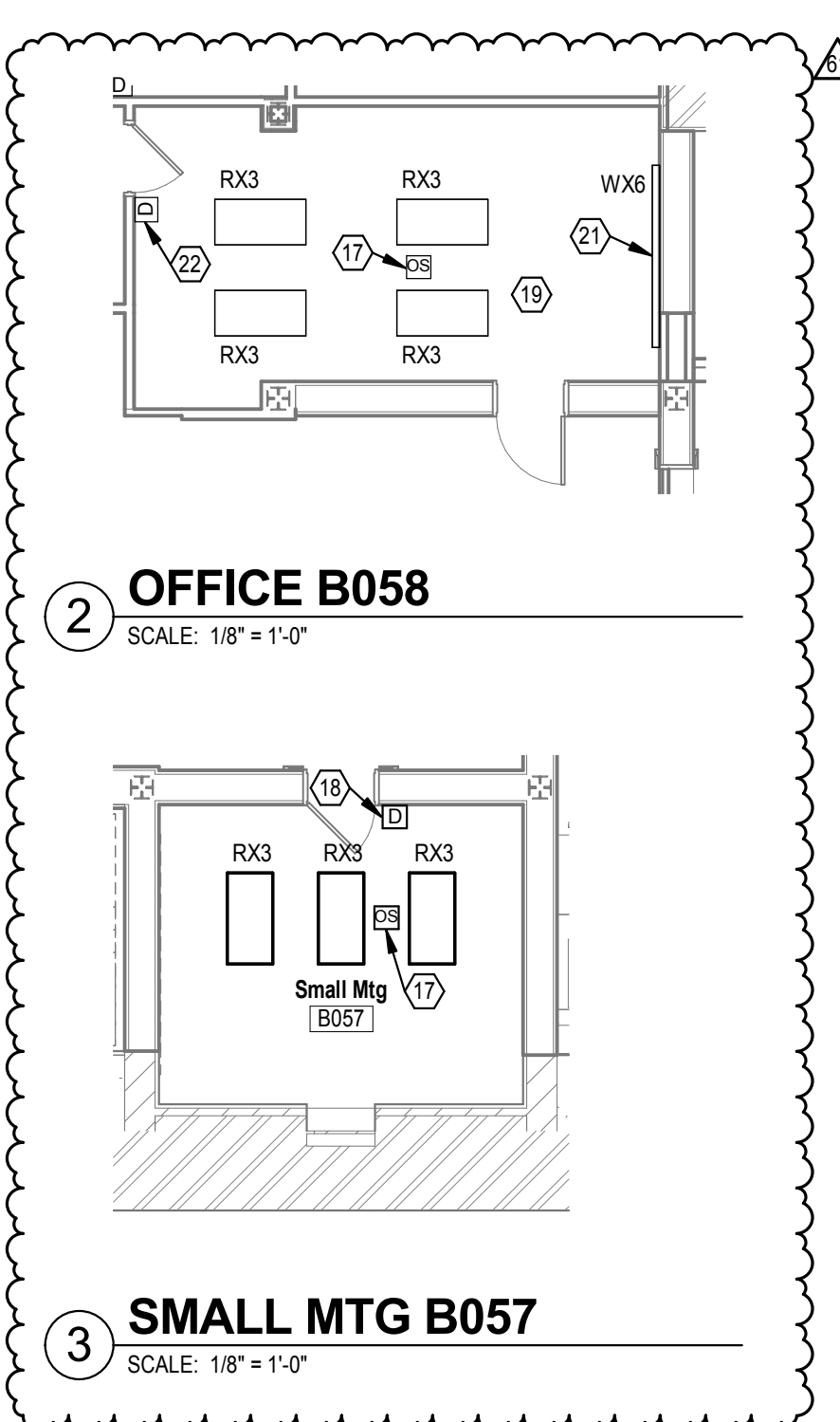


BASEMENT FLOOR LIGHTING PLAN B
SCALE: 1/8" = 1'-0"

GENERAL NOTES
A. COORDINATE LOCATION ALL LIGHTING WITH ARCHITECTURAL REFLECTED CEILING PLANS.

- NOTES**
- ALL EXISTING LUMINAIRES IN THIS AREA SHALL BE WIRED TO THIS DESIGNATED PANEL UNLESS OTHERWISE NOTED. NIGHT LIGHTING AND EGRESS LUMINAIRES SHALL BE CONTROLLED SEPARATELY.
 - ALL LUMINAIRES IN THIS AREA SHALL BE REMOVED CLEANED, PROVIDED DISCONNECT PER NEC 410.130(G) AND REINSTALLED TO ACCOMMODATE NEW WORK.
 - NO LIGHTING WORK IN THIS AREA. MAINTAIN EXISTING CIRCUITS AND CONTROLS.
 - "G" LUMINAIRE IN THE SOC AREA SHALL HAVE 0-10 DIMMING BALLASTS. REFER TO DETAIL #9 ON SHEET E004 FOR CONTROLS AND WIRING OF LUMINAIRES IN THIS SPACE.

- CODED NOTES**
- REPLACE EXISTING CYLINDER FIXTURE WITH NEW LED FIXTURE TYPE CX2. REFER TO LIGHTING FIXTURE SCHEDULE ON SHEET E0.17 FOR FIXTURE SPECIFICATION. (TYPICAL OF ALL TYPE CX2).
 - REPLACE EXISTING 2X4' FIXTURE WITH NEW LED FIXTURE TYPE RX3. REFER TO LIGHTING FIXTURE SCHEDULE ON SHEET E0.17 FOR FIXTURE SPECIFICATION. (TYPICAL OF ALL TYPE RX3, UNO).
 - PROVIDE NEW LED FIXTURE TYPE RX3. FIXTURES IN ROOM TO BE INSTALLED 4" ON CENTER AND CENTERED IN ROOM OVER TABLE IN EXISTING CEILING GRID.
 - REPLACE EXISTING DOWNLIGHT FIXTURE WITH NEW LED FIXTURE TYPE RX4. REFER TO LIGHTING FIXTURE SCHEDULE ON SHEET E0.17 FOR FIXTURE SPECIFICATION.
 - REMOVE EXISTING CYLINDER FIXTURE AND REPAIR CEILING ABOVE, INCLUDING JUNCTION BOX COVERPLATE PAINTED TO MATCH CEILING.
 - SPACE CURRENTLY ENCLOSED AS "BASEMENT MEETING ROOM B". REMOVE LIGHTING FIXTURES WITHIN THIS ROOM FROM CURRENT CONTROL SWITCH (LOCATED AT DOUBLE DOORS ADJACENT TO KITCHEN/VENDING). PROVIDE NEW LOCAL WIRELESS LIGHTING CONTROLS FOR THIS ROOM AS SHOWN.
 - PROVIDE WIRELESS DIMMER SWITCH FOR CONTROL OF FIXTURE TYPE RX3 WITHIN "BASEMENT MEETING ROOM B".
 - PROVIDE WIRELESS CEILING MOUNTED OCCUPANCY SENSOR FOR CONTROL OF FIXTURE TYPE RX3 WITHIN "BASEMENT MEETING ROOM B".
 - REMOVE FIXTURES CX2 WITHIN "BASEMENT TRAINING 20" FROM CURRENT LIGHTING CIRCUIT (CURRENTLY WITH CX2 FIXTURES IN STAFF LOUNGE) AND CONNECT TO LOCAL LIGHTING AND CONTROL CIRCUIT ALONG WITH EXISTING TYPE A FIXTURES.
 - REMOVE EXISTING 3-GANG SWITCH AND REPLACE WITH BLANK COVERPLATE.
 - PROVIDE WIRELESS CEILING MOUNTED OCCUPANCY SENSOR(S) FOR CONTROL OF ALL LIGHTING (TYPES CX2, RX3, AND RX4) IN THE STAFF LOUNGE AND KITCHEN/VENDING AREA TOGETHER.
 - REPLACE EXISTING CEILING MOUNTED 4X4' LIGHT FIXTURE WITH NEW LED FIXTURE TYPE CX5. REFER TO LIGHTING FIXTURE SCHEDULE ON SHEET E0.17 FOR FIXTURE SPECIFICATION. REPAIR CEILING AS NEEDED.
 - PROVIDE WIRELESS CEILING MOUNTED OCCUPANCY SENSOR(S) FOR CONTROL OF LOCAL ROOM LIGHTING.
 - REMOVE EXISTING 2-GANG TOGGLE SWITCH AND PROVIDE SINGLE NEW WIRELESS DIMMER SWITCH FOR CONTROL OF LOCAL LIGHTING.
 - REPLACE EXISTING LIGHTING FIXTURES WITH NEW LED FIXTURE TYPE RX3 AS SHOWN. CORRECT GRID IF NECESSARY TO PROVIDE LAYOUT SHOWN.
 - PROVIDE WIRELESS DIMMER SWITCH FOR CONTROL OF LOCAL LIGHTING.
 - MOUNT NEW LED LINEAR TYPE Wx6 CENTERED ON WALL AT 6'-6" AFF. REFER TO LIGHTING FIXTURE SCHEDULE ON SHEET E0.17 FOR FIXTURE SPECIFICATION.
 - REMOVE EXISTING TOGGLE SWITCH AND PROVIDE NEW DIMMER SWITCH FOR CONTROL OF LOCAL LIGHTING.



KORDA
KORDA NEMETH ENGINEERING
1650 WATERMARK DRIVE
SUITE 200
COLUMBUS, OHIO 43215
DRAWN BY: Author
DESIGNED BY: JLT
CHECKED BY: EWH
PROJECT NUMBER: 2017-5008

Sca
SchooleyCaldwell Associates
architects engineers planners interior designers
300 Marconi Boulevard T 614-628-0300
Columbus OH 43215 F 614-628-0311
schooleyaldwell.com

GUND PARTNERSHIP
ARCHITECTURE | PLANNING
47 THORNDIKE STREET
CAMBRIDGE, MA 02141
617 | 250 8800
617 | 577 9614 FAX

Consultants:
Structural
SMBH
1188 Dublin Road, Suite 200
Columbus, Ohio 43215-1008
Mechanical, Electrical, Plumbing & Fire
Protection
Heavy Engineering
443 W. Sandusky Ave.
Dayton, Ohio 45408-1310
Landscape
NIKS
231 South Linden Alley
Columbus, Ohio 43215

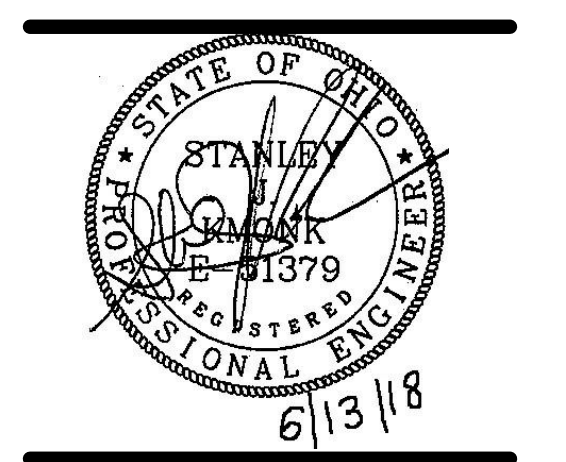
COLUMBUS METROPOLITAN LIBRARY

Main Branch
96 South Grant Avenue
Columbus, OH 43215

Drawing Issue Dates
Record Document
October 28, 2016

REVISIONS:

REV NO	DESCRIPTION	DATE
60	PHASE 2	5/24/18
61	PHASE 3	6/13/18



BASEMENT FLOOR LIGHTING PLAN B

EL1.10B

KORDA | CML
09/22/2017 | 2017-5008