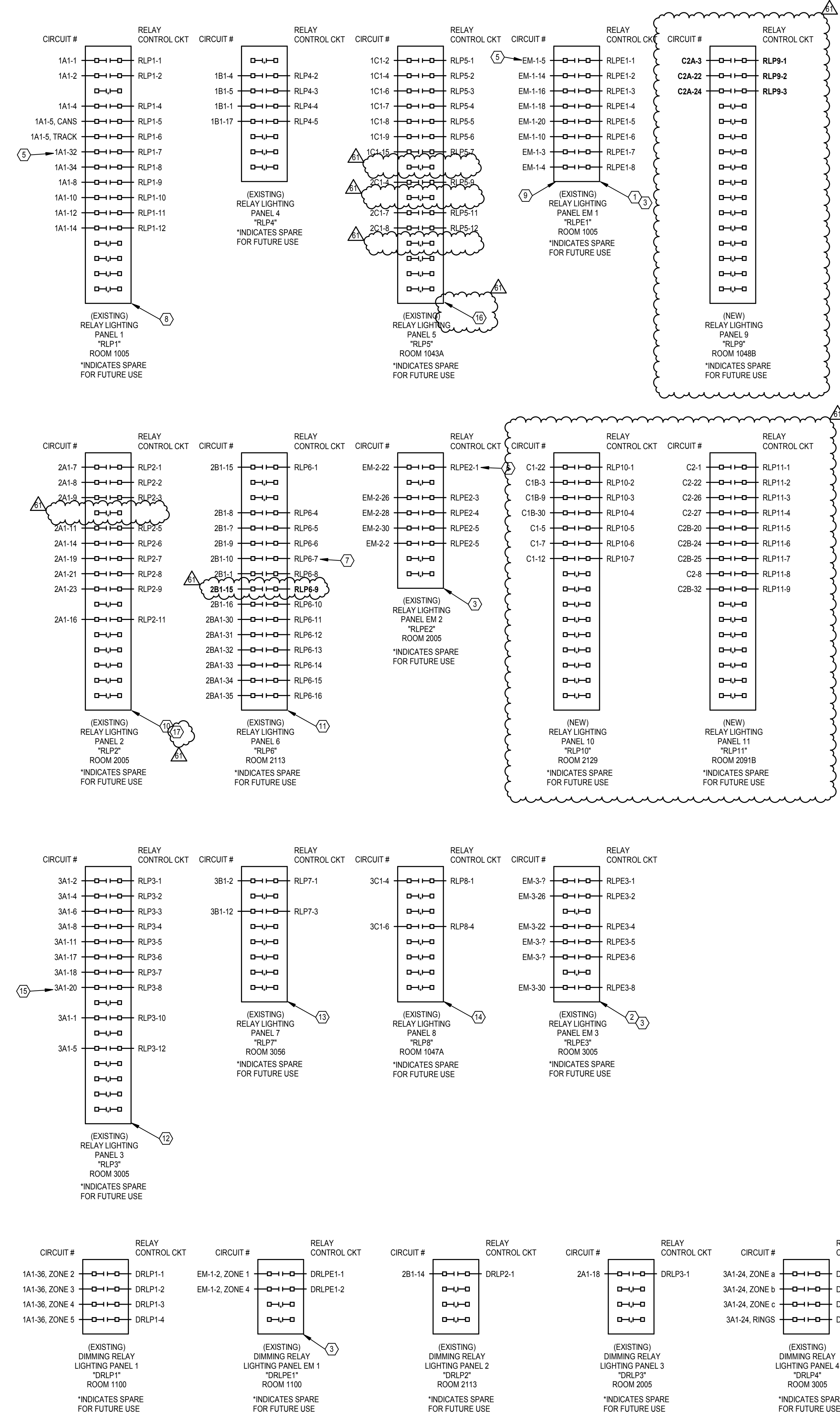


Panel: 3BA2											
Location: Elec 3056			Mounting: Surface			A.I.C. Rating: MCB					
Supply From: T1-3B1			Enclosure: Type 1			Mains Type: MCB					
Voltage: 120/208 Wye-3PH-4W						Mains Rating: 225 A					
CKT	Circuit Description	Tripp	Poles	A	B	C	Poles	Tripp	Circuit Description	CKT	
1	Receptacle Info Line...	20 A	1	360 VA	540 VA		1	20 A	Receptacle Room 3052	2	
3	Receptacle Room...	20 A	1	540 VA	540 VA		1	20 A	Receptacle Study...	4	
5	Receptacle Study...	20 A	1			540 VA	180 VA	1	20 A	EXIST R	6
7	Receptacle	20 A	1	180 VA	900 VA			1	20 A	Receptacle Study...	8
9	Receptacle	20 A	1		720 VA	360 VA		1	20 A	Receptacle	10
11	Receptacle	20 A	1			360 VA	540 VA	1	20 A	Receptacle	12
13	PROJECTOR	20 A	1	180 VA	680 VA			1	20 A	PROJECTION SCREEN	14
15						720 VA		1	20 A	Receptacle Meeting...	16
17	Receptacle	20 A	1			180 VA	180 VA	1	20 A	EXIST R	18
19				360 VA				1	20 A	Receptacle Event Spac...	20
21	Motor Info Line - Open...	20 A	2		582 VA	582 VA		2	20 A	VAV	22
23						582 VA	582 VA				24
25											26
27											28
29											30
Total Load:				3.20 kVA	4.04 kVA	3.14 kVA					
Load Classification		Connected...	Demand Factor	Estimated...	Panel Totals						
Motor		2330 VA	112.50%	2621 VA	Total Conn. Load: 10390 VA						
Receptacle		8060 VA	100.00%	8060 VA	Total Est. Demand: 10681 VA						
							Total Conn.: 29 A				
							Total Est. Demand: 30 A				
Notes:											
TOTAL CONNECTED		10.39 kVA		ESTIMATED DEMAND		10.68 kVA (30 A)					

FIXTURE NUMBER	FIXTURE DESCRIPTION	FIXTURE VOLTAGE
RX1	8" DIAMETER LED RETROFIT DOWNLIGHT. 1500 LUMEN. 0-10V 10% DIMMING DRIVER. 80+ CRI. 4000K COLOR TEMPERATURE. SELF-FLANGED. MEDIUM BEAM REFLECTOR W/ SEMI-SPECULAR CLEAR FINISH. (BASIS OF DESIGN - PORTFOLIO : LD8ART15D010TE ER8A15840 8LMOH)	120-277
Z1	1.25" DIAMETER LED ROUND SUSPENDED LINEAR. 4' LENGTH. STANDARD LUMEN OUTPUT (354 LM/FT). REMOTE ELECTRONIC (NON-DIMMING) DRIVER. 3500K COLOR TEMPERATURE. CABLE SUSPENDED. ANODIZED SATIN CLEAR FINISH. FROSTED WHITE LENS. ROTATIONAL W/ 1.25" KNUCKLE. 36" CABLE LENGTH. BLACK POWER CORD. STANDARD 5" ROUND SILVER CANOPY. (BASIS OF DESIGN - BIRCHWOOD : HAI-LED-125-SLO-35-4-SC-FW-277-EB-CSS-R-B-STND-SL)	277
CX2	12" ROUND X 3.75" DEEP. CEILING MOUNT ROUND DIRECT LED SHALLOW CYLINDER. 1500 LUMEN. 3500K COLOR TEMPERATURE. 0-10V 10% DIMMING DRIVER. SEMI DIFFUSE LOW IRIDESCENT CLEAR TRIM. MICRO PRISM SOLITE LENS. SURFACE MOUNT. MATTE WHITE FINISH. (BASIS OF DESIGN - SPECTRUM LTG INC. : C1203GV-15L35K-DS10X-TSGSO-SM-MW)	120-277
RX3	2' X 4' X 3-3/4" RECESSED LED TROFFER. 5098 LUMEN. 3500K COLOR TEMPERATURE. 0-10V 10% DIMMING DRIVER. NANO PRISM LENS SHIELDING. (BASIS OF DESIGN - CORELITE : R3-WN-3L35-LD5-UNV-24-T1-STD)	120-277
RX4	6" DIAMETER RECESSED LED RETROFIT DOWNLIGHT. 1500 LUMEN. 0-10V 1% DIMMING DRIVER. 3500K COLOR TEMPERATURE. 80 CRI. WIDE DISTRIBUTION. WHITE PAINTED SELF-FLANGED. SEMI-SPECULAR CLEAR FINISH. C-CHANNEL BAR HANGER 26" LONG. PAIR. (BASIS OF DESIGN - PORTFOLIO : LDRT6B15D010/ EU6B10208035/ 6LBW2H/ HB26)	120-277
CX5	4' DIAMETER X 3.7" DEEP SURFACE MOUNT LED ROUND FIXTURE. FROSTED LENS. 7000 LUMEN DIRECT DISTRIBUTION. SUBTLE GLOW INDIRECT DISTRIBUTION. 3500K COLOR TEMPERATURE. SINGLE CIRCUIT. 0-10V 1% DIMMING DRIVER. MATTE SATIN WHITE HOUSING FINISH. (BASIS OF DESIGN - FOCAL POINT : FSDEP-4-FL-7000DN-SG-35K-1C-UNV-L11-SM-WH)	120-277
WX6	5.25" WIDE X 3" TALL X 8" LONG. WALL MOUNT INDIRECT LUMINOUS LEDGE LED. HIGH LUMEN OUTPUT (893 LM/FT). 3500K COLOR TEMPERATURE. NARROW DISTRIBUTION. MATTE WHITE POWDER COAT FINISH. 0-10V 1% DIMMING DRIVER. PROVIDE W/ PLASTIC DUST COVER OPTION. (BASIS OF DESIGN - BIRCHWOOD : NAT-LED-HLO-35-10-8-MW-277-D1-PDC)	277
WX7	2.25" DIAMETER LED ROUND WALL/ARM MOUNT LINEAR. 8' LENGTH. STANDARD LUMEN OUTPUT (349 LM/FT). INTEGRAL 0-10V 1% DIMMING DRIVER. 3500K COLOR TEMPERATURE. ANODIZED SATIN CLEAR FINISH. FROSTED WHITE LENS. ROTATIONAL ARM SYSTEM. CABLE TIE BACK. 4" COVER PLATE W/ 2.25" KNUCKLE. SATIN CLEAR COVER PLATE FINISH. 18" ARM LENGTH. (BASIS OF DESIGN - BIRCHWOOD : HAI-LED-225-SLO-35-8-SC-FW-120-D1-RAS-4CP-R2-SC-18)	120
CX8	4' LONG X 3" WIDE X 3" TALL SURFACE MOUNT LED LINEAR COVE FIXTURE. STANDARD PROFILE. STANDARD LUMEN OUTPUT (548 LM/FT). 3500K COLOR TEMPERATURE. 4' LENGTH. HIGH REFLECTIVITY WHITE FINISH. 0-10V 1% DIMMING DRIVER. PROVIDE W/ MOUNTING CLIP W/ 30 DEGREE TILT. (BASIS OF DESIGN - BIRCHWOOD : WP-LED-SLO-35-4-HRW-277-D1-30T)	277
RX9	2' X 2' X 3-3/4" RECESSED LED TROFFER. 2559 LUMEN. 3500K COLOR TEMPERATURE. 0-10V 10% DIMMING DRIVER. NANO PRISM LENS SHIELDING. (BASIS OF DESIGN - PORTFOLIO : R3-WN-2-L35-LD5-UNV-22-T1-STD)	120-277

3 LIGHTING FIXTURE SCHEDULE



1 RELAY LIGHTING CONTROLS

- CODED NOTES
- REMOVE EXISTING CKT EM-1-24 FROM RELAY RLP1E-1 & LEAVE CKT HOT. REMOVE EXISTING CKT EM-1-26 FROM RELAY RLP1E-1 & LEAVE CKT HOT.
 - REMOVE EXISTING CKT EM-3-4 FROM RELAY RLP3E-3 & LEAVE CKT HOT. REMOVE EXISTING CKT EM-3-28 FROM RELAY RLP3E-3. CKT TO EXTEND THRU RELAY PANEL DRLP4 AS SHOWN BELOW.
 - PROVIDE EMERGENCY LIGHTING INTERFACE (LIT-ELI) FOR EACH EMERGENCY RELAY PANEL (BOTH DIMMING AND NON-DIMMING) TO FORCE LIGHTS TO ON & FULL BRIGHTNESS IN THE EVENT OF AN EMERGENCY.
 - EXISTING QUANTUM VIEW SYSTEM ON SITE. ADD ADDITIONAL ZONES SHOWN ON PLANS AS WELL AS ALL EMERGENCY LTG TO EXISTING VISUAL SOFTWARE. REVISE PROGRAMMING OF DAYLIGHT HARVESTING & DIMMING ZONES AS DESCRIBED ON PLANS. PROGRAM NEW & EXISTING 5-BUTTON STATIONS AS DESCRIBED ON PLANS. ALL ON SITE PROGRAMMING TO BE PERFORMED AFTER HOURS.
 - PROGRAM RELAY TO TURN CONNECTED LIGHTING ON AT DUSK AND OFF AT DAWN.
 - RE-PROGRAM RELAY RLP2E-1. PROGRAM INDICATES THAT THESE LIGHTS ARE OFF, BUT LIGHTING REMAINS ON. RE-PROGRAM TO CORRECT THIS ISSUE.
 - IDENTIFY FIXTURES IN LUTRON CONTROLLER PROGRAM.
 - REMOVE CKT 1A1-3 FROM RELAY RLP1-3.
 - REMOVE CKT EM-1-26 FROM RELAY RLP1E-1.
 - REMOVE CKT 2A1-31 FROM RELAY RLP2-10.
 - REMOVE CKT 2B1-2 FROM RELAY RLP6-2, AND CKT 2B1-6 FROM RELAY RLP6-3.
 - REMOVE CKT 3A1-20 FROM RELAY RLP3-8, AND CKT 3A1-3 FROM RELAY RLP3-11.
 - REMOVE CKT 3B1-4 FROM RELAY RLP7-2.
 - PROGRAM RELAYS RLP8-1 AND RLP8-4 AS SEPARATE ZONES IN LUTRON CONTROLLER PROGRAM.
 - RE-PROGRAM RELAY TO BE ON 24/7.
 - REMOVE CKTS 2C1-2, 2C1-6 & 2C1-9 FROM RELAYS RLP5-6, RLP5-10, AND RLP5-13.
 - REMOVE CKT 2A1-10 FROM RELAY RLP2-4.

C:\Users\ogallina\Desktop\central files\2017-5008 CML Main Branch\PSG_17-175008-CML - Main Branch ELECC.rvt 6/13/2018 2:07:49 PM



300 Marconi Boulevard Columbus OH 43215
Tel: 614-628-0300 Fax: 614-628-0311
schooleycaaldwell.com

GUNDPARTNERSHIP
ARCHITECTURE | PLANNING
47 THORNDIKE STREET
CAMBRIDGE, MA 02141
617 | 250 8800
617 | 577 9614 FAX

Consultants:
Structural: **SMBH**
1188 Dublin Road, Suite 200
Columbus, Ohio 43215-1008
Mechanical, Electrical, Plumbing & Fire Protection
Heapy Engineering
440 W. Sandusky Ave.
Dayton, OH 45409-1310
Landscape: **NKS**
252 South Ludlow Ave.
Columbus, Ohio 43215



Main Branch
96 South Grant Avenue
Columbus, OH 43215

Drawing Issue Dates
Record Document
October 28, 2016

REV NO	DESCRIPTION	DATE
60	PHASE 2	5/24/18
61	PHASE 3	6/13/18



RELAY LIGHTING CONTROL

KORDA
KORDA NEMETH ENGINEERING
1650 WATERMARK DRIVE
SUITE 200
COLUMBUS, OHIO 43215
DRAWN BY: Author
DESIGNED BY: PSG
CHECKED BY: CHECKER
PROJECT NUMBER: 2017-5008

E0.17
KORDA | CML
09/22/2017 | 2017-5008