

CODED NOTES:

- NEW SECURITY DEVICES TO BE WIRED INTO EXISTING SYSTEMS. ALARM CONTACT FOR TEMPORARY DOOR TO BE REMOVED AFTER PHASE 2 IS COMPLETE. ALARM SYSTEM KEY-PAD TO BE RELOCATED FOR PHASE 1 AND COORDINATE WITH OCCUPANCY OF PHASE 1.
- EXISTING LIGHTING CONTACTORS TO REMAIN.
- NEW LOCATION FOR EXISTING CONTACTORS. COORDINATE REMOVAL WITH DISCONNECT SWITCHES DESCRIBED IN NOTE 7.
- EXISTING SITE LIGHTING CONTACTOR, TIME CLOCK AND BYPASS SWITCH TO REMAIN.
- EXISTING TELEPHONE INTERMEDIATE DISTRIBUTION BOARD TO REMAIN. ORIGINAL SERVICE TO BE CAPPED AND ABANDONED.
- EXISTING 200 AMP DISCONNECT SWITCH TO REMAIN. SEE POWER RISER ON SHEET E-3.
- NEW DISCONNECT SWITCHES TO SERVE PANELS "D", "E" & "F". SEE POWER RISER ON SHEET E-3.
- WIREMOLD 4000 SERIES SURFACE MOUNTED RACEWAY MOUNTED BELOW COUNTER AT 24" ABOVE FLOOR. RACEWAY TO HAVE A 120 VOLT POWER CELL WITH DUPLEX RECEPTACLES AT 24" ON CENTER AND A SEPARATE DATA/TELEPHONE CELL WITH OUTLETS 48" ON CENTER. PROVIDE 120 VOLT CIRCUITS FOR EACH SECTION AS INDICATED AND PROVIDE A 1" DATA/TELEPHONE CONDUIT FROM EACH SECTION TO ABOVE CEILING.
- NEW UNDERGROUND FEEDERS TO PANELS "D", "E" & "F". PROVIDE PULL BOXES AS SHOWN. COORDINATE EXCAVATION WITH EXISTING AND NEW UTILITIES. SEE POWER RISER ON SHEET E-3.
- PROVIDE THREE GANG FLOOR BOX WITH DATA/TELEPHONE OUTLET AND TWO DUPLEX RECEPTACLES. GENERAL CONTRACTOR WILL CUT A TRENCH IN EXISTING FLOOR FOR INSTALLATION OF BOX AND ROUTING OF CONDUITS TO WALL. PROVIDE 1" DATA/TELEPHONE CONDUIT TO ABOVE CEILING AND PROVIDE 120 VOLT CIRCUITS AS SHOWN. SEE ARCHITECTURAL FLOOR PLANS FOR LOCATION AND EXTENT OF FLOOR CUTTING.
- WIREMOLD 4000 SERIES SURFACE MOUNTED RACEWAY MOUNTED BELOW COUNTER AT 24" ABOVE FLOOR. RACEWAY TO HAVE A 120 VOLT POWER CELL WITH DUPLEX RECEPTACLES AT 24" ON CENTER AND A SEPARATE DATA/TELEPHONE CELL WITH OUTLETS 48" ON CENTER. PROVIDE (2) 1" DATA CONDUITS TO ABOVE CEILING AND 120V CIRCUITS AS SHOWN. GENERAL CONTRACTOR WILL CUT A TRENCH IN EXISTING FLOOR FOR ROUTING OF CONDUITS. SEE ARCHITECTURAL DRAWINGS FOR LOCATION AND EXTENT OF FLOOR CUTTING. AT COUNTER TURN CONDUITS UP EXPOSED AND CONNECT TO RACEWAY. INTERCONNECT RACEWAY SECTIONS WITH FLEXIBLE CONDUIT.

SECURITY DEVICE SYMBOLS

- (G) = GLASS BREAK DETECTOR
- (DC) = DOOR CONTACT
- (MD) = MOTION DETECTOR
- (P) = PANIC BUTTON

- PROVIDE ROUGH-INS IN WALLS AND COUNTERS AS SHOWN. GENERAL CONTRACTOR WILL CUT A TRENCH IN EXISTING FLOOR FOR ROUTING OF CONDUITS TO WALL. PROVIDE 1" DATA/TELEPHONE CONDUITS TO ABOVE CEILING AND INSTALL 120 VOLT CIRCUITS AS SHOWN. SEE ARCHITECTURAL DRAWINGS FOR LOCATION AND EXTENT OF FLOOR CUTTING.
- PROVIDE THREE GANG FLOOR BOX AND MAKE POWER AND DATA/TELEPHONE CONNECTIONS TO FREE STANDING COMPUTER CARRIERS WITH FLEXIBLE CONDUIT. GENERAL CONTRACTOR WILL CUT TRENCH IN EXISTING FLOOR FOR INSTALLATION OF BOX AND ROUTING OF CONDUITS TO WALL. PROVIDE 1" DATA/TELEPHONE CONDUIT TO ABOVE CEILING AND INSTALL 120 VOLT CIRCUITS AS SHOWN.
- RECEPTACLE FOR 120 VOLT CHANGE DISPENSER. PROVIDE SURFACE MOUNTED WIREMOLD TO ABOVE CEILING AND VERIFY MOUNTING HEIGHT. Add #2, Item #17.
- RECEPTACLE FOR 120 VOLT COPIER. CUT AND PATCH WALL AS REQUIRED TO INSTALL ROUGH-IN AND CONDUIT.
- CUT AND PATCH EXISTING WALL AS REQUIRED TO INSTALL NEW ROUGH-INS AND CONDUITS.
- EXISTING RECEPTACLE TO REMAIN ON EXISTING CIRCUIT AS IS.
- RECEPTACLES & DATA OUTLETS FOR SELF-CHECK OUT STATIONS. VERIFY EXACT HEIGHT PRIOR TO ROUGH-IN AND MAKE FINAL CONNECTIONS.
- EXISTING POWER AND DATA ROUGH-INS. EXTEND FLEXIBLE CONDUIT BEHIND COUNTER INTO NEW CIRCULATION DESK. EXTEND POWER WIRING AND PROVIDE RECEPTACLES IN CIRCULATION DESK.
- ROUTE CONDUITS FOR POWER AND DATA IN FLOOR FROM CIRCULATION DESK TO WALL THEN TO ABOVE CEILING. PROVIDE RECEPTACLES IN CIRCULATION DESK AND 120 VOLT CIRCUITS AS SHOWN. PROVIDE 1" DATA CONDUIT TO ABOVE CEILING. Add #2, Item #18.
- ELECTRICAL CONTRACTOR TO CORE DRILL FLOOR AND INSTALL FIRE RATED "POKE-THRU" FITTINGS AND CONNECT WITH FLEXIBLE CONDUIT TO COMPUTER CARRIERS. MAKE CONNECTIONS TO RECEPTACLES IN TEMPORARY CIRCULATION DESK DURING PHASE 2 CONSTRUCTION AND PROVIDE RECEPTACLES FOR TEMPORARY PAC UNITS.
- 208 VOLT 1/4 HAND DRYER. VERIFY MOUNTING HEIGHT AND MAKE FINAL CONNECTIONS. RUN 2 #10 & #10 GRD IN 3/4" CONDUIT TO 20A-1P BREAKER.
- QU-6 (BY MECH. CONTRACTOR): 51.7 MCA, 208V, 3A. E.C. TO PROVIDE 60A/2P WEATHERPROOF FUSIBLE DISC SWITCH (FUUSED AT 60A). RUN 3 #6, 1 #10 GRD IN 3/4" TO 60A/2P CIRCUIT BREAKER IN PANEL NOTED. MAKE FINAL CONNECTION TO UNIT.

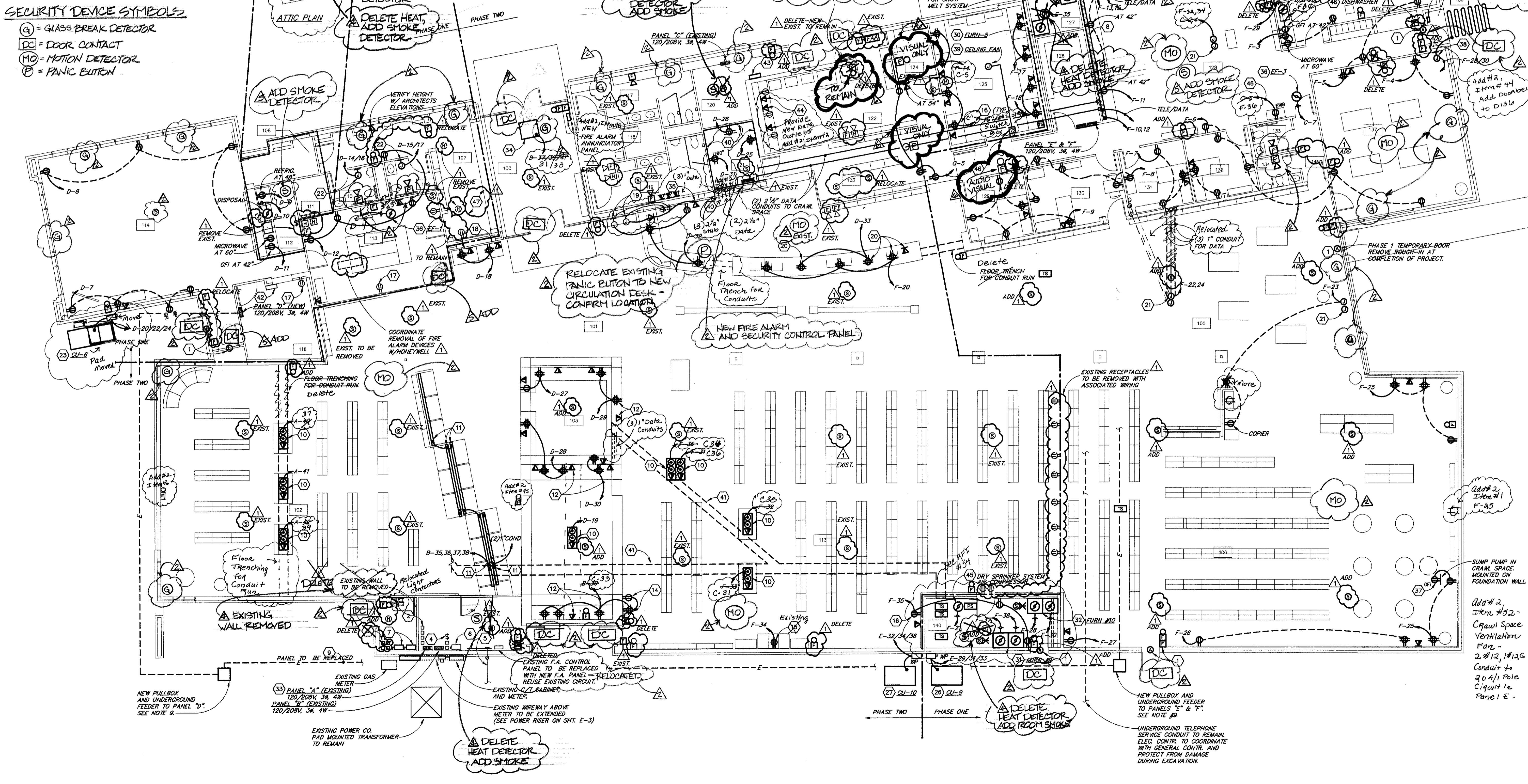
- QU-2 (BY MECH. CONTRACTOR): 36.9 MCA, 208V, 1A. E.C. TO PROVIDE 60A/2P WEATHERPROOF FUSIBLE DISC SWITCH (FUUSED AT 60A). RUN 3 #6, 1 #10 GRD IN 3/4" TO 60A/2P CIRCUIT BREAKER IN PANEL NOTED. MAKE FINAL CONNECTION TO UNIT.
- QU-8 (BY MECH. CONTRACTOR): 36.9 MCA, 208V, 1A. E.C. TO PROVIDE 60A/2P WEATHERPROOF FUSIBLE DISC SWITCH (FUUSED AT 60A). RUN 3 #6, 1 #10 GRD IN 3/4" TO 60A/2P CIRCUIT BREAKER IN PANEL NOTED. MAKE FINAL CONNECTION TO UNIT.
- QU-9 (BY MECH. CONTRACTOR): 51.7 MCA, 208V, 3A. E.C. TO PROVIDE 60A/2P WEATHERPROOF FUSIBLE DISC SWITCH (FUUSED AT 60A). RUN 3 #6, 1 #10 GRD IN 3/4" TO 60A/2P CIRCUIT BREAKER IN PANEL NOTED. MAKE FINAL CONNECTION TO UNIT.
- QU-10 (BY MECH. CONTRACTOR): 51.7 MCA, 208V, 3A. E.C. TO PROVIDE 60A/2P WEATHERPROOF FUSIBLE DISC SWITCH (FUUSED AT 60A). RUN 3 #6, 1 #10 GRD IN 3/4" TO 60A/2P CIRCUIT BREAKER IN PANEL NOTED. MAKE FINAL CONNECTION TO UNIT.
- FURN-8 (BY MECH. CONTRACTOR): 1/2HP, 120V, 1A. E.C. TO PROVIDE MANUAL MOTOR STARTER AT UNIT. RUN 2 #12, 1 #12 GRD IN 3/4" TO 20A-1P CIRCUIT BREAKER IN PANEL NOTED. PROVIDE DUCT SMOKE DETECTOR IN RETURN AIR DUCT. WIRE TO SHUT DOWN UNIT UPON SENSING OF SMOKE. PROVIDE 120V FOR HUMIDIFIER FROM FURNACE POWER.
- FURN-2 (BY MECH. CONTRACTOR): 1/2HP, 120V, 1A. E.C. TO PROVIDE MANUAL MOTOR STARTER AT UNIT. RUN 2 #12, 1 #12 GRD IN 3/4" TO 20A-1P CIRCUIT BREAKER IN PANEL NOTED. PROVIDE 120V FOR HUMIDIFIER FROM FURNACE POWER.
- FURN-6 (BY MECH. CONTRACTOR): 1/2HP, 120V, 1A. E.C. TO PROVIDE MANUAL MOTOR STARTER AT UNIT. RUN 2 #12, 1 #12 GRD IN 3/4" TO 20A-1P CIRCUIT BREAKER IN PANEL NOTED. PROVIDE DUCT SMOKE DETECTOR IN RETURN AIR DUCT. WIRE TO SHUT DOWN UNIT UPON SENSING OF SMOKE. PROVIDE 120V FOR HUMIDIFIER FROM FURNACE POWER.
- FURN-10 (BY MECH. CONTRACTOR): 1/2HP, 120V, 1A. E.C. TO PROVIDE MANUAL MOTOR STARTER AT UNIT. RUN 2 #12, 1 #12 GRD IN 3/4" TO 20A-1P CIRCUIT BREAKER IN PANEL NOTED. PROVIDE DUCT SMOKE DETECTOR IN RETURN AIR DUCT. WIRE TO SHUT DOWN UNIT UPON SENSING OF SMOKE. PROVIDE 120V FOR HUMIDIFIER FROM FURNACE POWER.

- PROVIDE 20A/1P CIRCUIT BREAKERS IN EXISTING PANEL "A" FOR AVAILABLE SPACES (CIRCUITS NO. 35, 36, 37, 38, 39, 40, 41 & 42) FOR RECEPTACLES AS SHOWN IN ROOM 102. NEW CIRCUIT BREAKERS TO MATCH EXISTING WFR.
- ELECTRIC HEATER (BY M.C.): 5.0KW, 208V, 4W. E.C. TO RUN #10, 1 #10 GRD IN 3/4" TO 30A/3P CIRCUIT BREAKER IN PANEL NOTED. MAKE FINAL CONNECTION TO UNIT.
- POWER AND DATA ROUGH-INS FOR CASH REGISTER. VERIFY MOUNTING HEIGHT PRIOR TO ROUGH-IN SURFACE MOUNTED RACEWAY LOW ON WALL FROM COUNTER TO REGISTER. COORDINATE WITH ARCHITECT PRIOR TO STARTING WORK.
- 120V EXHAUST FANS, WIRE THRU TIME CLOCK (BY M.C.) TO CIRCUIT AS INDICATED. FIELD VERIFY EXACT LOCATION OF TIME CLOCK PRIOR TO ROUGH-IN.
- RECEPTACLE IN CRAWL SPACE FOR 120V SUMP PUMP.
- ADD #2, Item #14. JUNCTION BOX IN CRAWL SPACE FOR 208V 1/4 SNOW MELTING. PROVIDE TEMPERATURE SENSORS, PRECIPITATION SENSORS, CONTACTORS, SNOW MELTING CABLE WIRING AND CONDUIT REQUIRED TO PROTECT CONCRETE WALK AND STEPS. VERIFY AREA OF WALK AND QUANTITY STEPS WITH ARCHITECTURAL DRAWINGS. RUN 2 #10 & #10 GRD IN 3/4" CONDUIT FROM JUNCTION BOX TO 20A-1P BREAKER IN PANEL. SYSTEM BY Toucher. Model #EMA-18. S.E. 11/10/11. S.D. 11/10/11. V.P. 11/10/11. E.M. 11/10/11.
- PROVIDE JUNCTION BOX FOR CEILING FAN. RUN 2 #12, 1 #12 GRD IN 3/4" THRU VARIABLE SPEED CONTROLLER (BY M.C.) & TO 20A-1P CIRCUIT BREAKER IN PANEL NOTED. MAKE FINAL CONNECTION TO UNIT.
- PROVIDE 3/4" PLYWOOD WITH FIRE RETARDED PAINT, ON WALL FROM FLOOR TO CEILING. COORDINATE WITH LIGHT SWITCH, RECEPTACLES, DATA OUTLETS IN THIS ROOM. COORDINATE WITH THE OWNER ON EXISTING ROUGH-INS & EQUIPMENT. PROVIDE (3) 2 1/2" CONDUIT sleeves to E wall above ceiling. Add #2, Item #14.
- 7" TRENCH PROVIDE BY GENERAL CONTRACTOR. COORDINATE EXACT LOCATION WITH ARCHITECT AND OWNER. CUT-OUT TO ACCEPT PULL BOXES WHERE NECESSARY. Add #2, Item #50.

- (ALTERNATE) EXISTING IRRIGATION SYSTEM CONTROL PANEL TO BE RELOCATED TO ROOM 120 BY OTHERS. E.C. TO DISCONNECT.
- (ALTERNATE) RELOCATED IRRIGATION SYSTEM CONTROL PANEL (APPROX. LOCATION). E.C. TO EXTEND FEEDER FROM AVAILABLE POWER SOURCE IN THIS ROOM. FIELD VERIFY EXACT LOCATION PRIOR TO INSTALLING CONDUIT TO PANEL. P. BY E.C., Q.1 OTHER WIRING BY IRRIGATION SYSTEMS ON L-5. Add #2, Item #53.
- EXISTING RECEPTACLE TO REMAIN CONNECTED TO EXISTING CIRCUIT IN PANEL.
- DRY SPRINKLER SYSTEM AIR COMPRESSOR: 3/4HP, 18A, 120V. E.C. TO PROVIDE MANUAL MOTOR STARTER AT UNIT. RUN 2 #10, 1 #10 GRD IN 3/4" TO 30A-1P CIRCUIT IN PANEL NOTED.
- USE EXISTING CIRCUIT IN EXISTING PANEL "C". RELOCATE EXISTING BREAKERS IN PANEL "C" AND PROVIDE NEW 20A-1P CIRCUIT BREAKER AS REQUIRED. BREAKER TO MATCH EXISTING MANUFACTURER. UNLESS NOTED OTHERWISE, DISCONNECT AND REMOVE EXISTING, UNUSED RECEPTACLES WITH ASSOCIATED WIRING.

SPECIAL NOTES:

- SEE SHEET SU-1 FOR ADDITIONAL ELECTRICAL WORK THAT IS TO BE INCLUDED IN THE BASE BID.
- SEE SHEET SU-1 FOR LIST OF ELECTRICAL SYMBOLS.
- SECURITY SYSTEM DEVICE LOCATIONS SHALL BE COORDINATED WITH EQUIPMENT SUPPLIER AND SHALL BE WIRED TO SECURITY PANEL AS RECOMMENDED BY THE MANUFACTURER. - See Simplex Dwg.
- UNLESS NOTED OTHERWISE, EXISTING FIRE ALARM SYSTEM DEVICES TO REMAIN. REPOSITION EXISTING AUDIO/VISUAL DEVICES AS DIRECTED BY LOCAL FIRE DEPARTMENT.
- CONNECTIONS OF EXISTING DUCT SMOKE DETECTOR(S) SHALL BE TESTED, IF REQUIRED, PROVIDE POIT ID BASE AS REQUIRED BY MANUFACTURER.



GAHANNA BRANCH LIBRARY

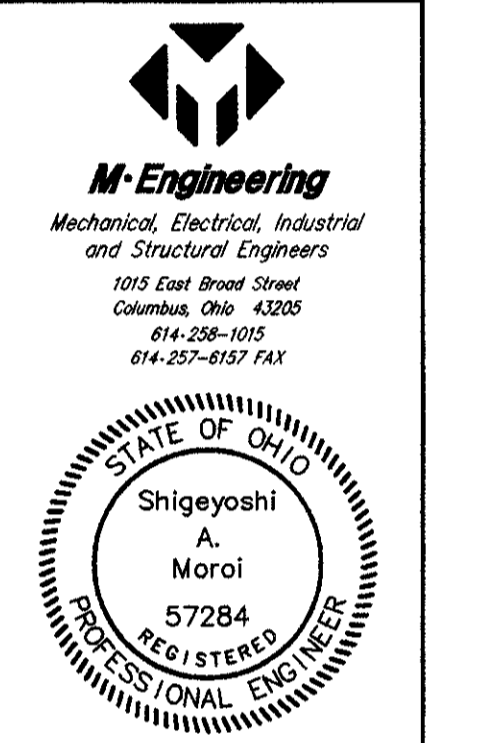
ADDITION FOR COLUMBUS METROPOLITAN LIBRARY

310 GRANVILLE ST.
GAHANNA, OHIO

PROJECT NUMBER: 96M122

ACOCK ASSOCIATES ARCHITECTS

383 NORTH FRONT STREET
COLUMBUS, OH 43215
(614) 228-1588



DESIGNED BY: MVT
COORDINATED BY: DG
DRAWN BY: PAB

POWER PLAN

See RFI #10-16
#19, #21, #22
#40, #41
#53: Grounding
#60 -> 63
S.O.S. 1/10/15
#66 - Room #140

SCALE: 1/8" = 1'-0"

ISSUE DATE: 01-14-97

REVISIONS:

NUMBER	DATE
1	(FIRE ALARM & MISC) 5/7/97
2	(SECURITY & MISC) 6/6/97
3	(ATTIC FIRE ALARM) 6/9/97
4	(DELETE HEAT DETECTOR) 11/17/97
5	(MCD SMOKE DETECTORS) 11/17/97
6	LIFE SAFETY ISSUES 3/3/98

Add #2, Item #52 - Crawl Space Ventilation Fan - 2 #12, 1 #12G Conduit to 20A/1 Pole Circuit in Panel E.